



Floor plans
Phase Two



THE DIDSBURY

EAST HAM E6





About Populo Living

Who are we?

Populo Homes is part of Populo Living Group, Newham Council's wholly owned housing company. We build quality homes for rent and look after the buildings and outdoor spaces, conduct and coordinate any maintenance needed and generally ensure all properties are kept in top condition.

Why rent with us?

We provide great homes, with great service, in great neighbourhoods.

From the moment you first get in touch with us, you'll find renting with Populo Living is a bit different. Because we understand the everyday challenges of living in and looking after a rented home, we've shaped the way we work to make things as easy as possible for our residents.

Dedicated service

Companies build houses; people make homes. When you're looking for a new place, our customer service team will be your first point of contact. They'll answer your queries, and help you deal with the paperwork. Once you move in, you'll find our team on-hand to look after the building and communal areas to a high professional standard.

Always transparent

When you rent with us, you'll know exactly what you're signing up to: straightforward contracts and paperwork, no hidden extras, no nasty surprises. You can see all our tenant fees in one place. We also promise regular communications to keep you informed of any work going on that might affect you or your home.

There when you need us

Your friendly property manager is on site regularly and will respond to all queries within one working day. If we can't solve them immediately, we'll be clear about what we propose to do and when.

Ensuring you peace of mind at all hours of the day and over the weekend, we provide emergency hotline for afterhours care, should an emergency arise you will have an out of hours point of contact. In addition to this we also guarantee alternative accommodation is provided in emergencies where necessary.

Sustainable and ethical

We know there's no Planet B, so we're determined to do things properly from the start. We'll always meet, or exceed, all green building standards now and in the future. We're minimising waste, noise, pollution and disruption when we build, and incorporating features that help our residents live greener – needing less energy to run their homes.

Customer Focussed

We want to make your letting experience as positive as possible for you and have therefore created additional offerings for residents at The Didsbury.

All our residents can sign up to Credit Ladder – this scheme reports rent payments to the four biggest UK credit reference agencies. This assists you to build up a high credit score which can help you to access finance at better rates and secure a mortgage should you wish to purchase your own home in the future.

We provide access to RentCafe our app which gives you the ability to access all of your documents within one location. You can also contact our team via the app as well as by telephone or email.

We understand the moving process can be stressful and we aim to make this as smooth as possible for you. We offer bespoke furniture packs providing you with stylish furniture for your home which will be in the flat for when you move in. In addition the cost of the furniture is spread across your first years tenancy meaning no big outlay is required at the start of your tenancy.

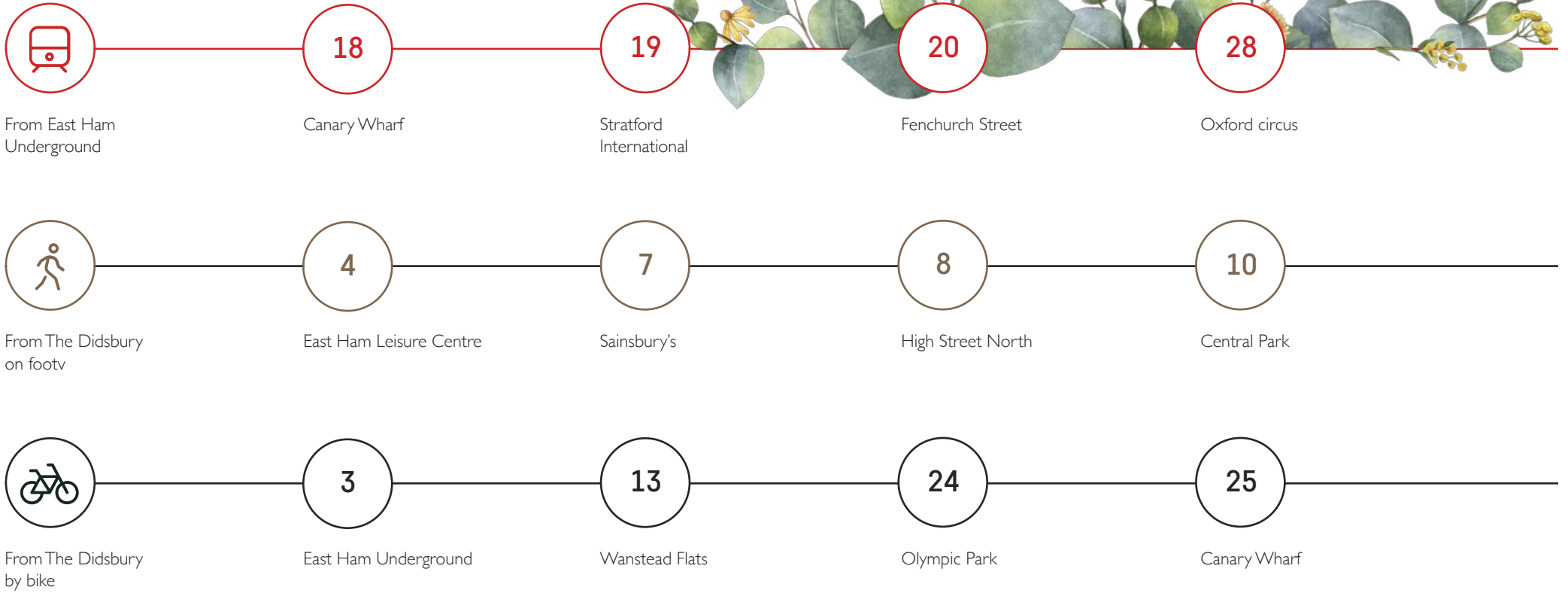
We provide great homes, with great service, in great neighbourhoods.

THE DIDSBURY

EAST HAM

Travel times

Travel times are shown in minutes



THE DIDSBURY

EAST HAM

Specification



Kitchen

Matt grey kitchens with composite stone worktops and full height under unit upstand

Under unit lighting

Undermounted stainless steel sink with Hansgrohe mixer tap

Beko electric oven, microwave, induction hob and integrated cooker hood

Integrated Beko fridge freezer

Beko integrated dishwasher

Beko washer / dryer – integrated within kitchen or freestanding where located in store cupboard

Flooring

Wood effect laminate flooring to hall, living areas and kitchen

Large ceramic format tiling to bathrooms and ensuites

Carpets to bedrooms

General

Ceilings, architraves, and skirtings painted white

Walls painted in white

Black ironmongery throughout

Built in wardrobes with black handles

Heating via white contemporary radiators

THE DIDSBURY

EAST HAM

Specification



Bathroom & Ensuite

Contemporary white bathroom suite comprising bath (to main bathroom), back to wall WC with soft close seat, semi recessed basin with Hansgrohe chrome mixer tap

Standard basin to W/C

Mirrored cabinet with shelving unit where possible

Chrome flush plate

Hansgrohe chrome thermostatic shower mixer and bath tap

Single glass shower screen to bath

Sliding shower enclosure door to ensuite

Large format wall tiling to bath and tiled upstand

Heated black towel rail

Electrical

Downlighting to Bathroom

Downlighting, pendant lighting or Four ball lighting to Kitchen dependent on type

Pendant lighting to bedroom, hallway and living areas

Downlighting to duplex apartment living areas

White sockets and switches throughout

Mixed media outlet to living room and all bedrooms

Smoke and heat detectors

Audio/video door entry system

Shaver socket to bathroom




THE DIDSBURY

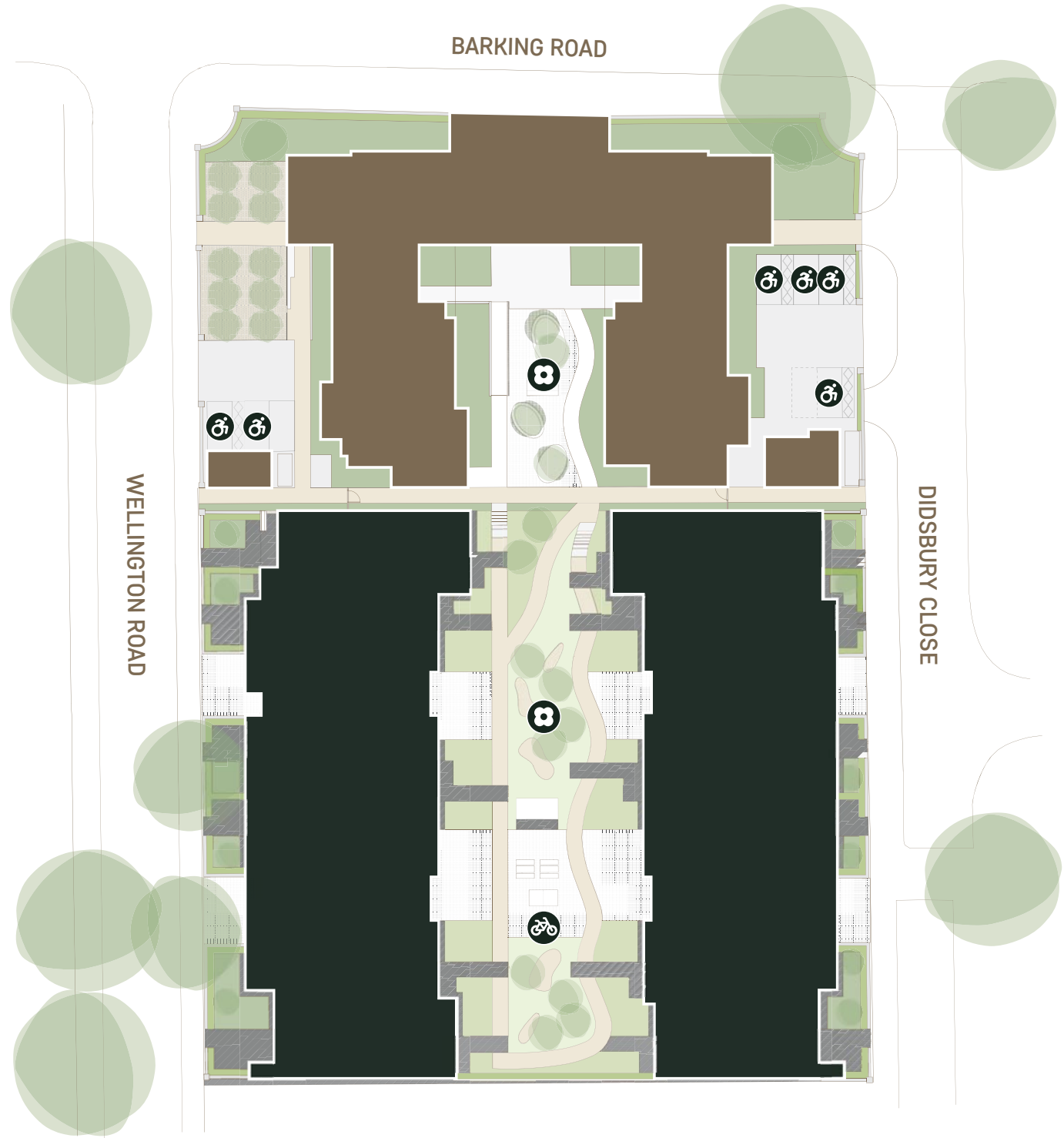
EAST HAM

Site plan

The Didsbury Annexe

Earlier phases at The Didsbury

-  Cycle parking
-  Disabled parking
-  Communal space



THE DIDSBURY

EAST HAM

Apartments 10 & 16

Studio

Internal area 40m² / 430ft²

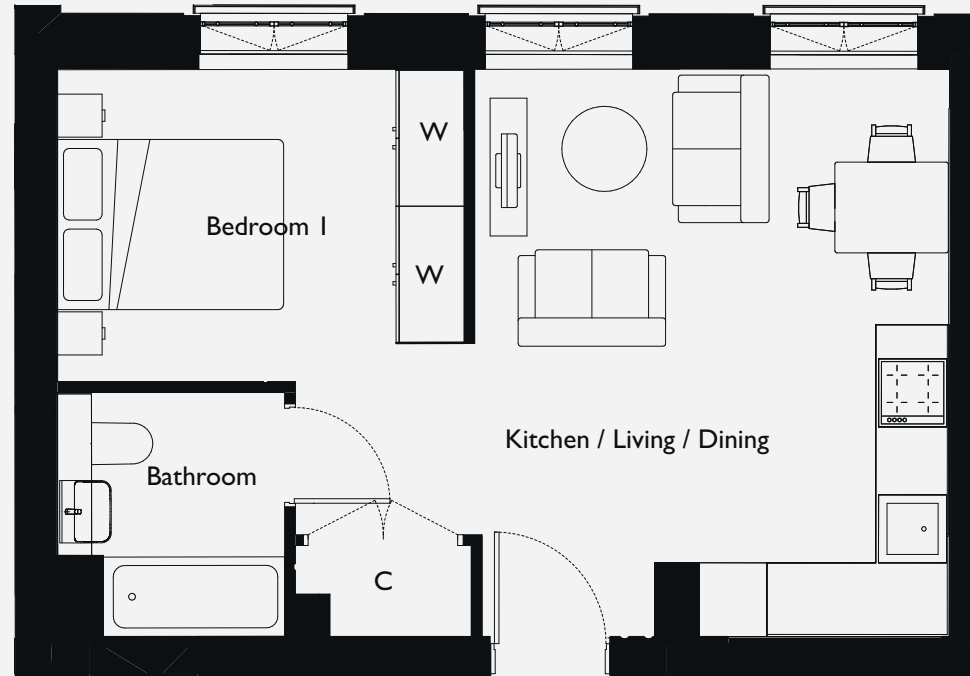
Dimensions

**Kitchen/Dining/
Living** 5.0m x 4.1m 16'5" x 13'5"

Bedroom I 2.9m x 2.7m 9'6" x 8'10"

Levels

1 & 2



Apartment layouts provide approximate measurements only. Furniture within the marketing plans is indicative and for guidance purposes only. Dimensions, which are taken from the indicated points of measurement, are for guidance only and are not intended to be used for carpet sizes, appliance space or items of furniture. Measurements are rounded down and we work towards 10% tolerance. Apartment areas are provided as gross internal areas and may vary. Bathroom and kitchen layouts are indicative only and are subject to change. Wardrobe size and position may vary. Ceiling heights may vary within select apartments. All private outdoor space dimensions and areas are approximate and may vary. The information contained within this document does not constitute part of any offer, contract or warranty. Whilst the plans have been prepared with all due care for the convenience of the intending purchaser, the information contained herein is a preliminary guide only. Ceiling height may vary within select apartments.

love
to rent  .co.uk

THE DIDSBURY

EAST HAM

Apartment 6

Studio

Internal area 45m² / 484ft²

Dimensions

**Kitchen/Dining/
Living** 5.2m x 5.2m 19'8" x 14'1"

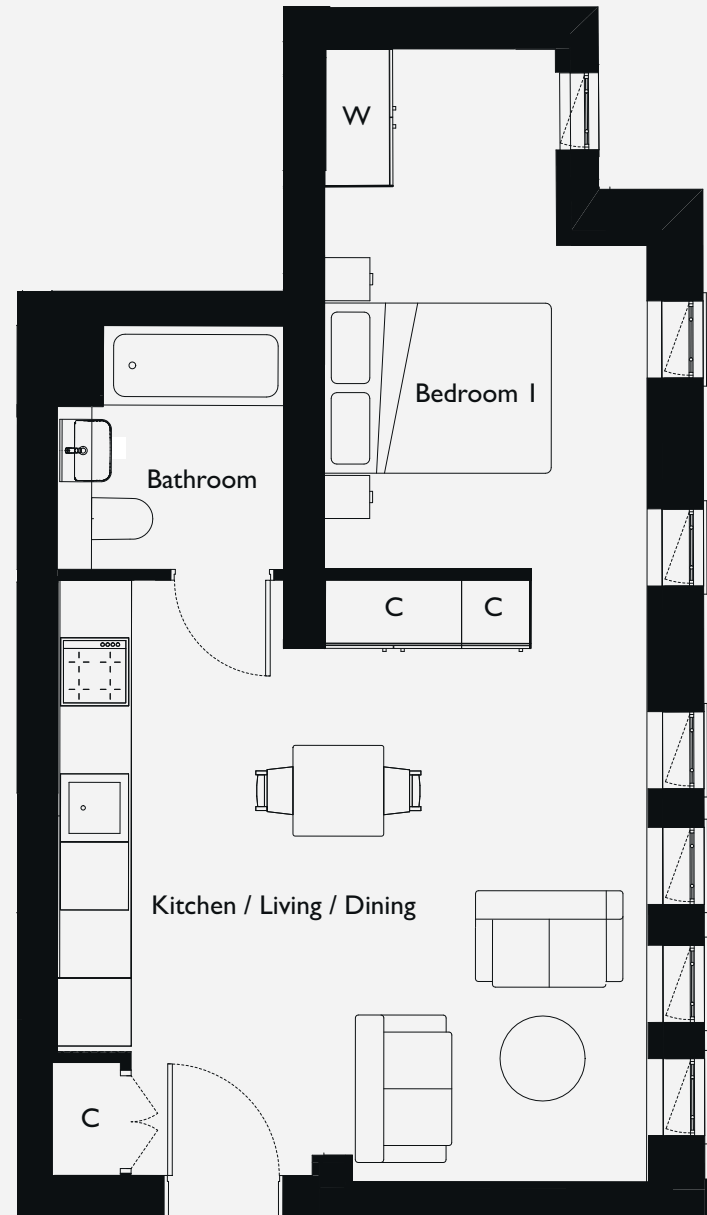
Bedroom I 4.0m x 2.8m 14'5" x 9'2"

Level

Ground



Apartment layouts provide approximate measurements only. Furniture within the marketing plans is indicative and for guidance purposes only. Dimensions, which are taken from the indicated points of measurement, are for guidance only and are not intended to be used for carpet sizes, appliance space or items of furniture. Measurements are rounded down and we work towards 10% tolerance. Apartment areas are provided as gross internal areas and may vary. Bathroom and kitchen layouts are indicative only and are subject to change. Wardrobe size and position may vary. Ceiling heights may vary within select apartments. All private outdoor space dimensions and areas are approximate and may vary. The information contained within this document does not constitute part of any offer, contract or warranty. Whilst the plans have been prepared with all due care for the convenience of the intending purchaser, the information contained herein is a preliminary guide only. Ceiling height may vary within select apartments.



THE DIDSBURY

EAST HAM

Apartment 27

Studio

Internal area 47m² / 505ft²

Dimensions

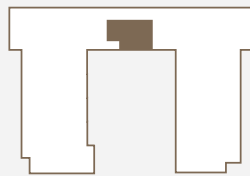
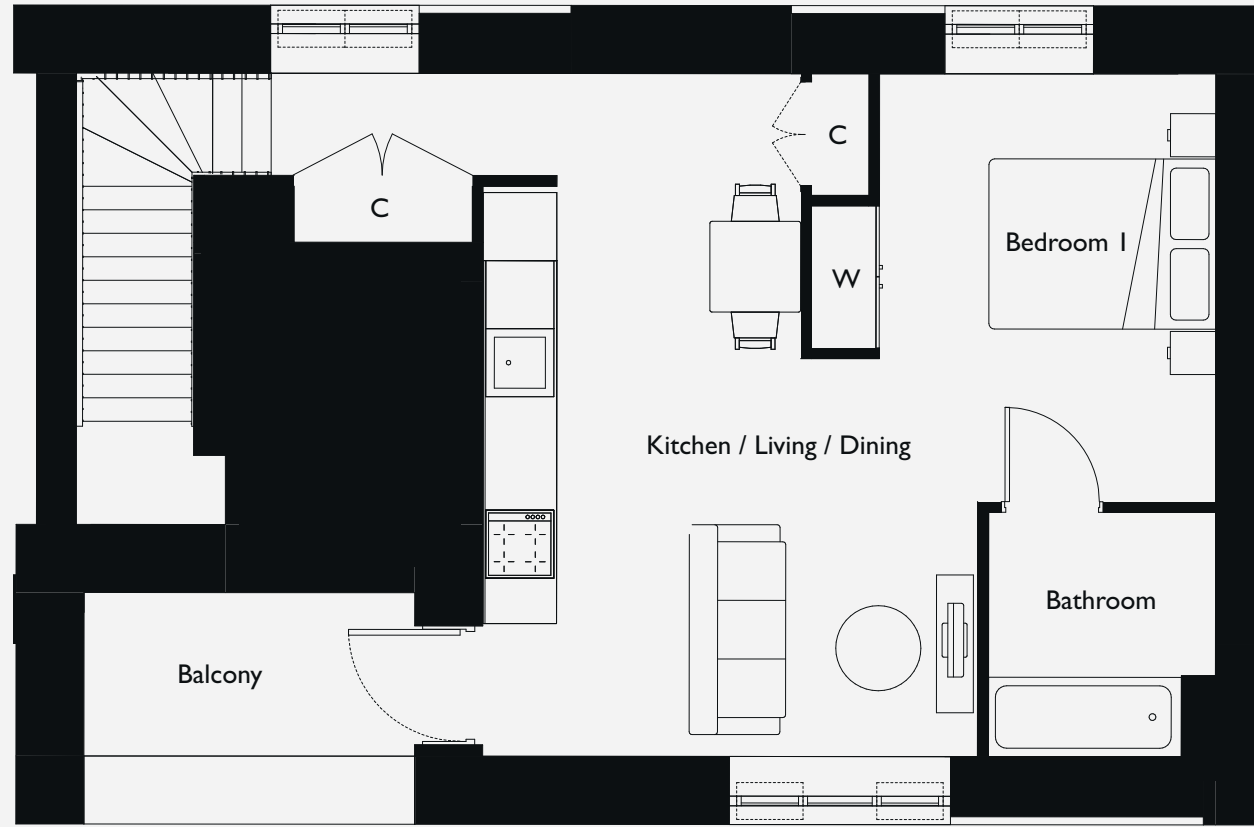
Kitchen/Dining/

Living 6.0m x 4.3m 19'8" x 14'1"

Bedroom I 3.7m x 2.9m 12'2" x 9'6"

Levels

3 & 4



Entrance via
lower floor

Apartment layouts provide approximate measurements only. Furniture within the marketing plans is indicative and for guidance purposes only. Dimensions, which are taken from the indicated points of measurement, are for guidance only and are not intended to be used for carpet sizes, appliance space or items of furniture. Measurements are rounded down and we work towards 10% tolerance. Apartment areas are provided as gross internal areas and may vary. Bathroom and kitchen layouts are indicative only and are subject to change. Wardrobe size and position may vary. Ceiling heights may vary within select apartments. All private outdoor space dimensions and areas are approximate and may vary. The information contained within this document does not constitute part of any offer, contract or warranty. Whilst the plans have been prepared with all due care for the convenience of the intending purchaser, the information contained herein is a preliminary guide only. Ceiling height may vary within select apartments.

love
to rent  .co.uk

THE DIDSBURY

EAST HAM

Apartment 5

One bedroom apartment

Internal area 50m² / 538ft²

Dimensions

**Kitchen/Dining/
Living** 6.1m x 5.1m 20'0" x 16'9"

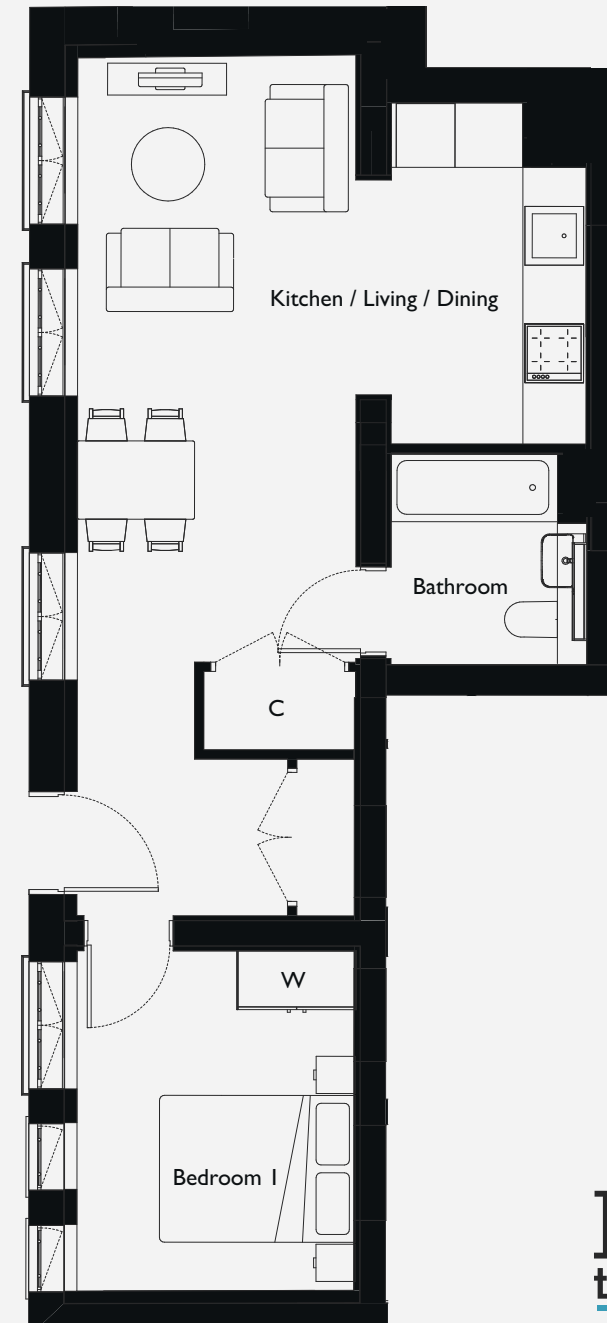
Bedroom I 3.4m x 2.8m 11'2" x 9'2"

Level

Ground



Apartment layouts provide approximate measurements only. Furniture within the marketing plans is indicative and for guidance purposes only. Dimensions, which are taken from the indicated points of measurement, are for guidance only and are not intended to be used for carpet sizes, appliance space or items of furniture. Measurements are rounded down and we work towards 10% tolerance. Apartment areas are provided as gross internal areas and may vary. Bathroom and kitchen layouts are indicative only and are subject to change. Wardrobe size and position may vary. Ceiling heights may vary within select apartments. All private outdoor space dimensions and areas are approximate and may vary. The information contained within this document does not constitute part of any offer, contract or warranty. Whilst the plans have been prepared with all due care for the convenience of the intending purchaser, the information contained herein is a preliminary guide only. Ceiling height may vary within select apartments.



love
to rent  .co.uk

THE DIDSBURY

EAST HAM

Apartments 15 & 21

One bedroom apartment

Internal area 50m² / 538ft²

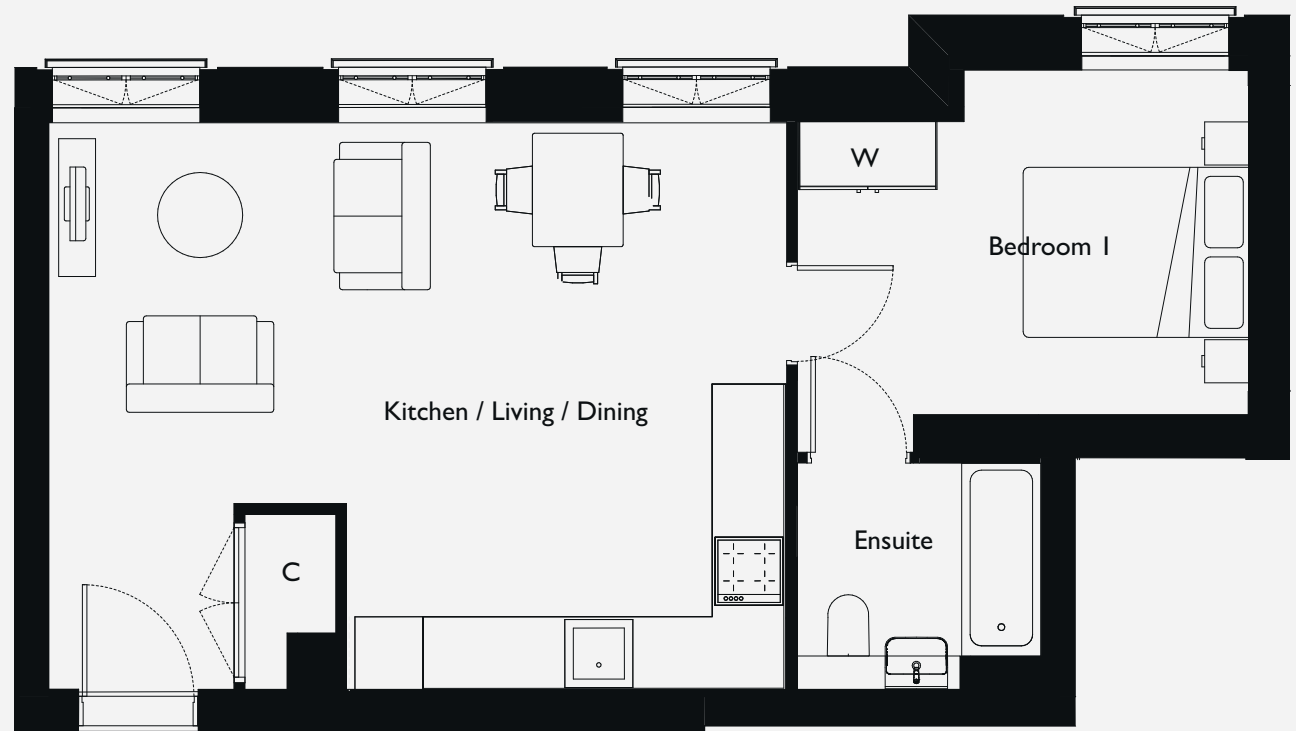
Dimensions

**Kitchen/Dining/
Living** 6.5m x 4.9m 21'4" x 16'1"

Bedroom I 3.9m x 3.0m 12'10" x 9'10"

Levels

1 & 2



Apartment layouts provide approximate measurements only. Furniture within the marketing plans is indicative and for guidance purposes only. Dimensions, which are taken from the indicated points of measurement, are for guidance only and are not intended to be used for carpet sizes, appliance space or items of furniture. Measurements are rounded down and we work towards 10% tolerance. Apartment areas are provided as gross internal areas and may vary. Bathroom and kitchen layouts are indicative only and are subject to change. Wardrobe size and position may vary. Ceiling heights may vary within select apartments. All private outdoor space dimensions and areas are approximate and may vary. The information contained within this document does not constitute part of any offer, contract or warranty. Whilst the plans have been prepared with all due care for the convenience of the intending purchaser, the information contained herein is a preliminary guide only. Ceiling height may vary within select apartments.

love
to rent  .co.uk

THE DIDSBURY

EAST HAM

Apartments 11 & 17

One bedroom apartment

Internal area 60m² / 645ft²

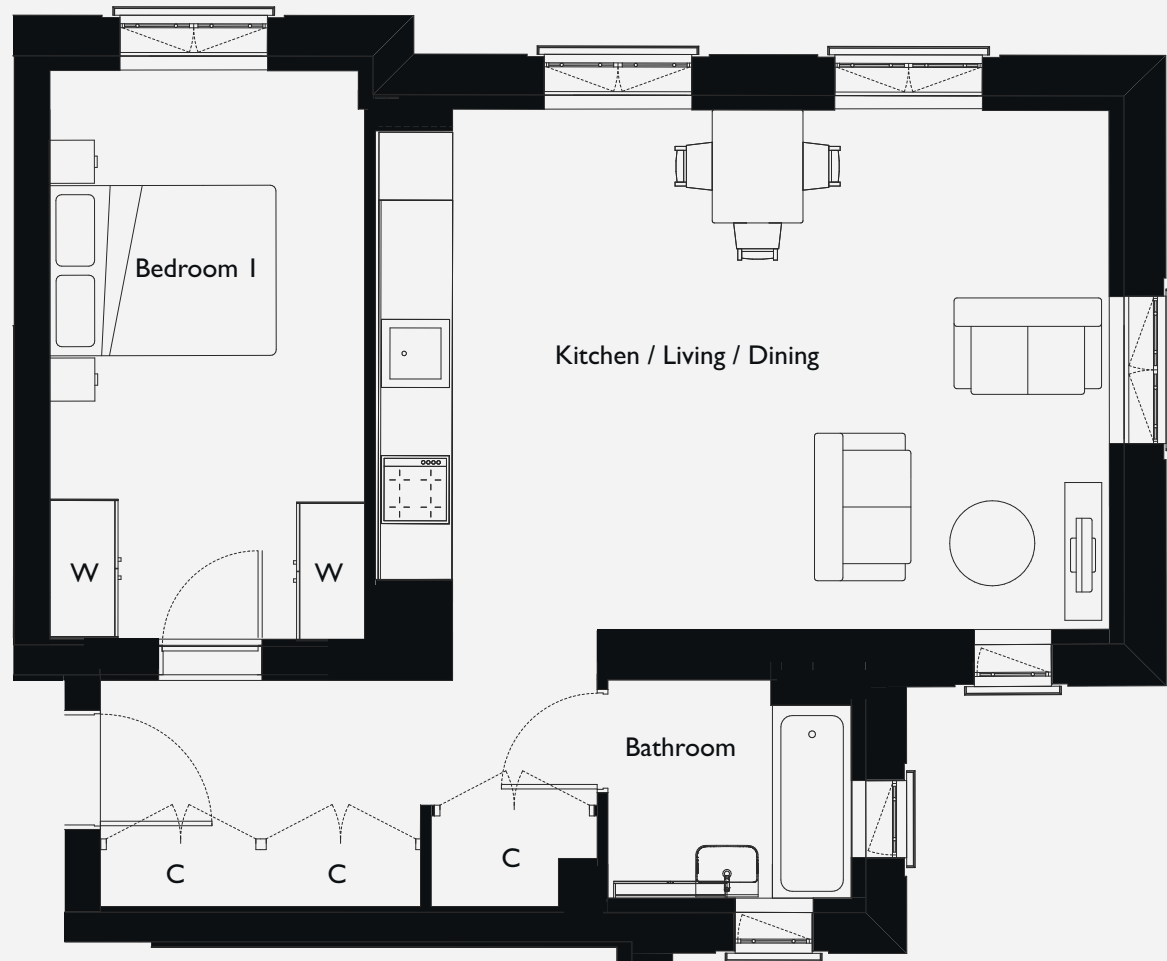
Dimensions

**Kitchen/Dining/
Living** 6.4m x 4.5m 21'0" x 14'9"

Bedroom I 5.0m x 2.7m 16'5" x 8'10"

Levels

1 & 2



Apartment layouts provide approximate measurements only. Furniture within the marketing plans is indicative and for guidance purposes only. Dimensions, which are taken from the indicated points of measurement, are for guidance only and are not intended to be used for carpet sizes, appliance space or items of furniture. Measurements are rounded down and we work towards 10% tolerance. Apartment areas are provided as gross internal areas and may vary. Bathroom and kitchen layouts are indicative only and are subject to change. Wardrobe size and position may vary. Ceiling heights may vary within select apartments. All private outdoor space dimensions and areas are approximate and may vary. The information contained within this document does not constitute part of any offer, contract or warranty. Whilst the plans have been prepared with all due care for the convenience of the intending purchaser, the information contained herein is a preliminary guide only. Ceiling height may vary within select apartments.

THE DIDSBURY

EAST HAM

Apartments 14 & 20

Two bedroom apartment

Internal area 63m² / 678ft²

Dimensions

Kitchen/Dining/

Living 6.1m x 4.6m 20'0" x 15'1"

Bedroom 1 3.8m x 3.0m 12'6" x 9'10"

Bedroom 2 1.9m x 3.7m 6'3" x 12'2"

Levels

1 & 2



Apartment layouts provide approximate measurements only. Furniture within the marketing plans is indicative and for guidance purposes only. Dimensions, which are taken from the indicated points of measurement, are for guidance only and are not intended to be used for carpet sizes, appliance space or items of furniture. Measurements are rounded down and we work towards 10% tolerance. Apartment areas are provided as gross internal areas and may vary. Bathroom and kitchen layouts are indicative only and are subject to change. Wardrobe size and position may vary. Ceiling heights may vary within select apartments. All private outdoor space dimensions and areas are approximate and may vary. The information contained within this document does not constitute part of any offer, contract or warranty. Whilst the plans have been prepared with all due care for the convenience of the intending purchaser, the information contained herein is a preliminary guide only. Ceiling height may vary within select apartments.

THE DIDSBURY

EAST HAM

Apartment 2

One bedroom apartment

Internal area 50m² / 538ft²

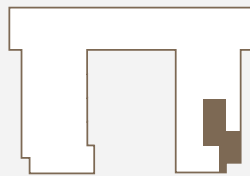
Dimensions

**Kitchen/Dining/
Living** 5.7m x 4.2m 18'8" x 13'9"

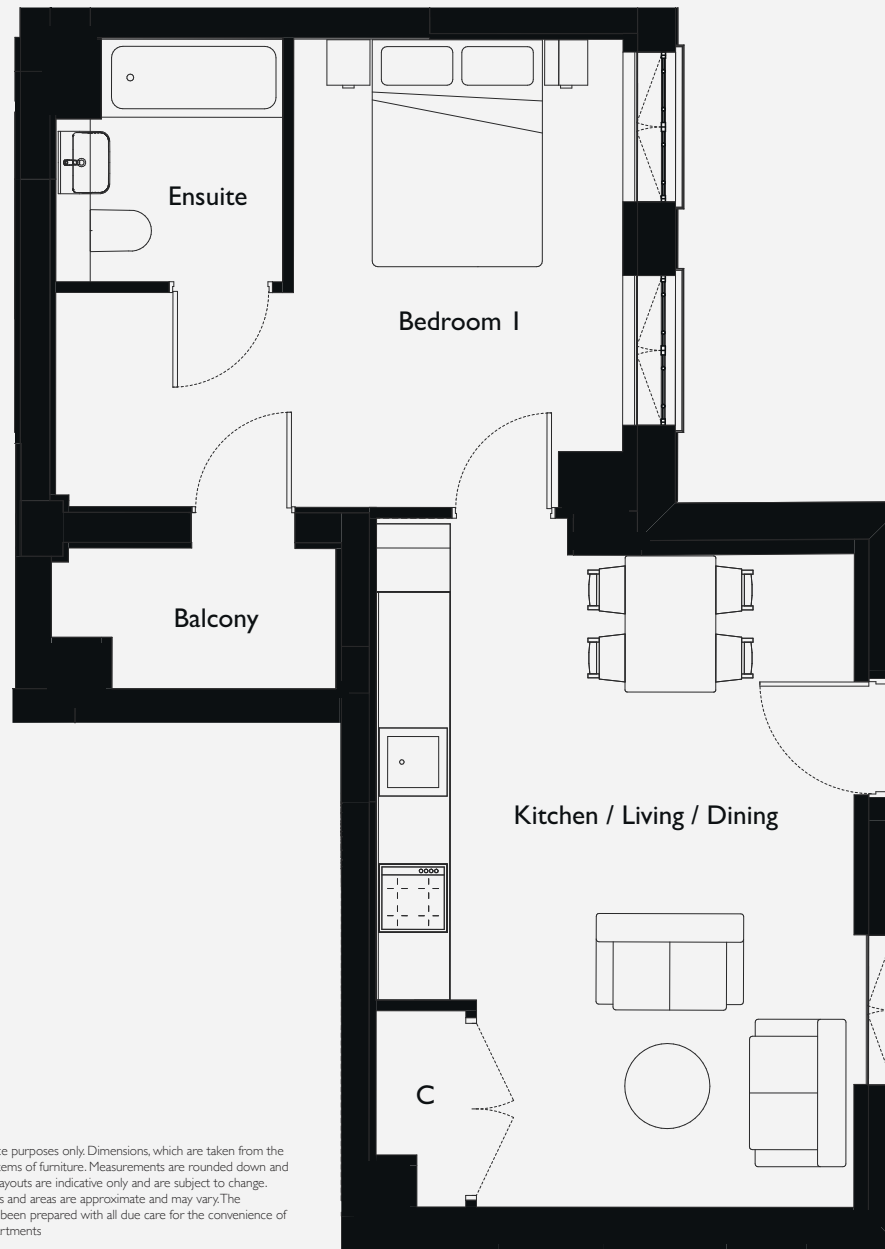
Bedroom I 5.0m x 4.1m 16'5" x 13'5"

Level

Ground



Apartment layouts provide approximate measurements only. Furniture within the marketing plans is indicative and for guidance purposes only. Dimensions, which are taken from the indicated points of measurement, are for guidance only and are not intended to be used for carpet sizes, appliance space or items of furniture. Measurements are rounded down and we work towards 10% tolerance. Apartment areas are provided as gross internal areas and may vary. Bathroom and kitchen layouts are indicative only and are subject to change. Wardrobe size and position may vary. Ceiling heights may vary within select apartments. All private outdoor space dimensions and areas are approximate and may vary. The information contained within this document does not constitute part of any offer, contract or warranty. Whilst the plans have been prepared with all due care for the convenience of the intending purchaser, the information contained herein is a preliminary guide only. Ceiling height may vary within select apartments.



THE DIDSBURY

EAST HAM

Apartments 34 & 36

Studio

Internal area 45m² / 484ft²

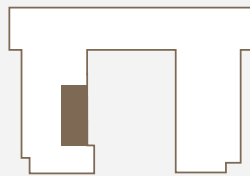
Dimensions

**Kitchen/Dining/
Living** 5.2m x 4.7m 17'1" x 15'5"

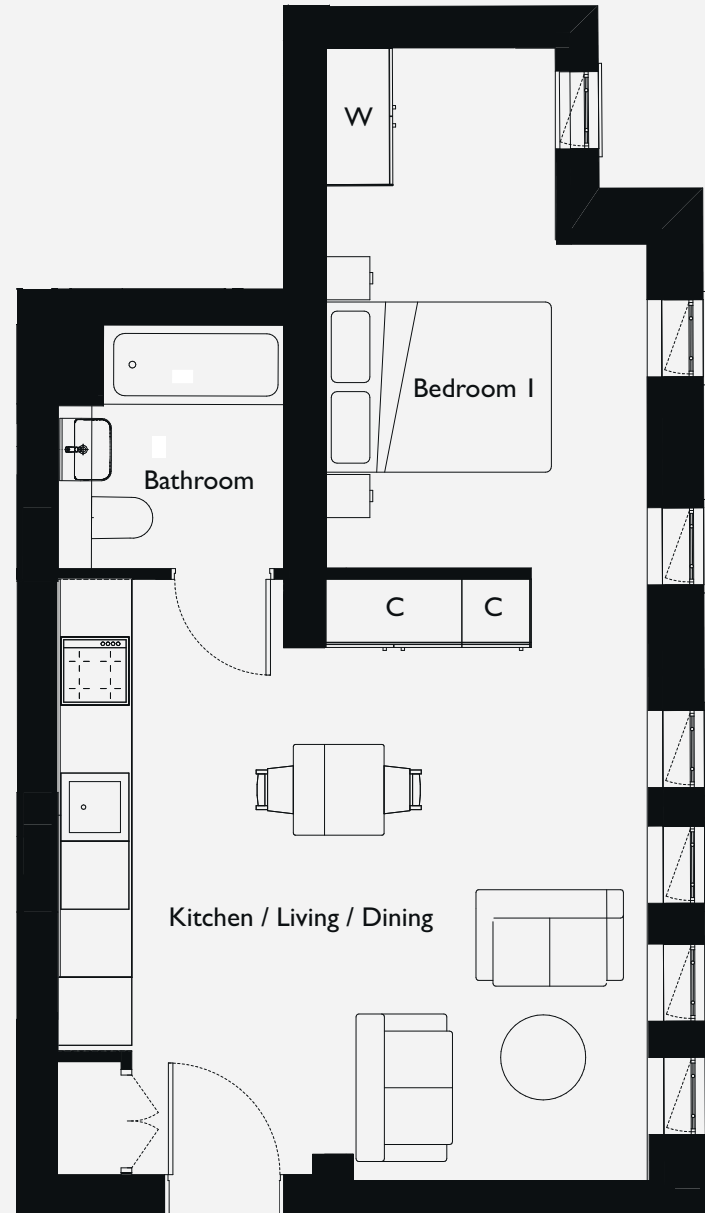
Bedroom I 4.5m x 2.8m 14'9" x 9'2"

Levels

1 & 2



Apartment layouts provide approximate measurements only. Furniture within the marketing plans is indicative and for guidance purposes only. Dimensions, which are taken from the indicated points of measurement, are for guidance only and are not intended to be used for carpet sizes, appliance space or items of furniture. Measurements are rounded down and we work towards 10% tolerance. Apartment areas are provided as gross internal areas and may vary. Bathroom and kitchen layouts are indicative only and are subject to change. Wardrobe size and position may vary. Ceiling heights may vary within select apartments. All private outdoor space dimensions and areas are approximate and may vary. The information contained within this document does not constitute part of any offer, contract or warranty. Whilst the plans have been prepared with all due care for the convenience of the intending purchaser, the information contained herein is a preliminary guide only. Ceiling height may vary within select apartments.



THE DIDSBURY

EAST HAM

Apartments 38 & 40

One bedroom apartment

Internal area 50m² / 538ft²

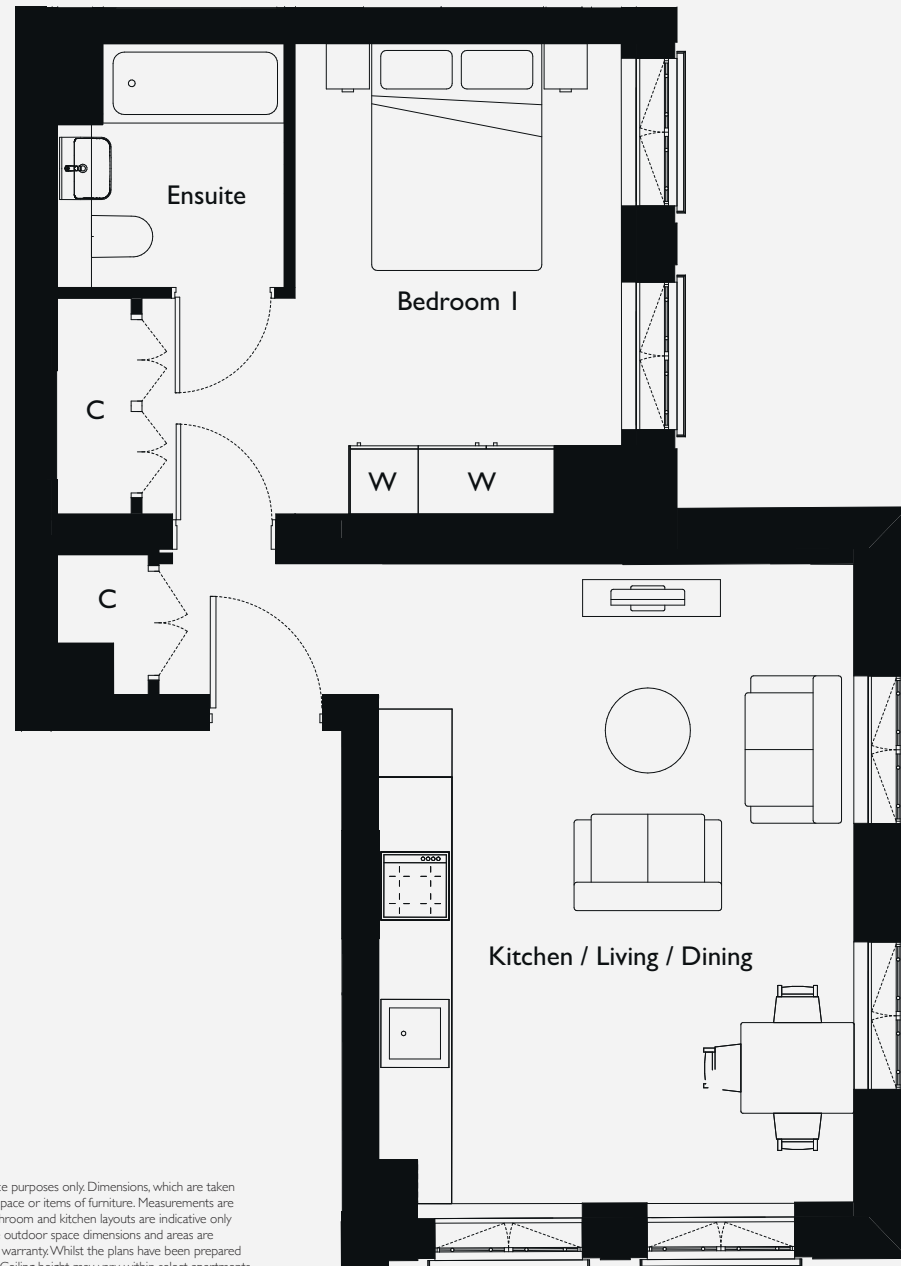
Dimensions

**Kitchen/Dining/
Living** 5.6m x 4.1m 18'4" x 13'5"

Bedroom I 4.1m x 2.8m 13'5" x 9'2"

Level

1 & 2



Apartment layouts provide approximate measurements only. Furniture within the marketing plans is indicative and for guidance purposes only. Dimensions, which are taken from the indicated points of measurement, are for guidance only and are not intended to be used for carpet sizes, appliance space or items of furniture. Measurements are rounded down and we work towards 10% tolerance. Apartment areas are provided as gross internal areas and may vary. Bathroom and kitchen layouts are indicative only and are subject to change. Wardrobe size and position may vary. Ceiling heights may vary within select apartments. All private outdoor space dimensions and areas are approximate and may vary. The information contained within this document does not constitute part of any offer, contract or warranty. Whilst the plans have been prepared with all due care for the convenience of the intending purchaser, the information contained herein is a preliminary guide only. Ceiling height may vary within select apartments.

THE DIDSBURY

EAST HAM

Apartments 13 & 19

Two bedroom apartment

Internal area 61m² / 565ft²

Dimensions

**Kitchen/Dining/
Living**

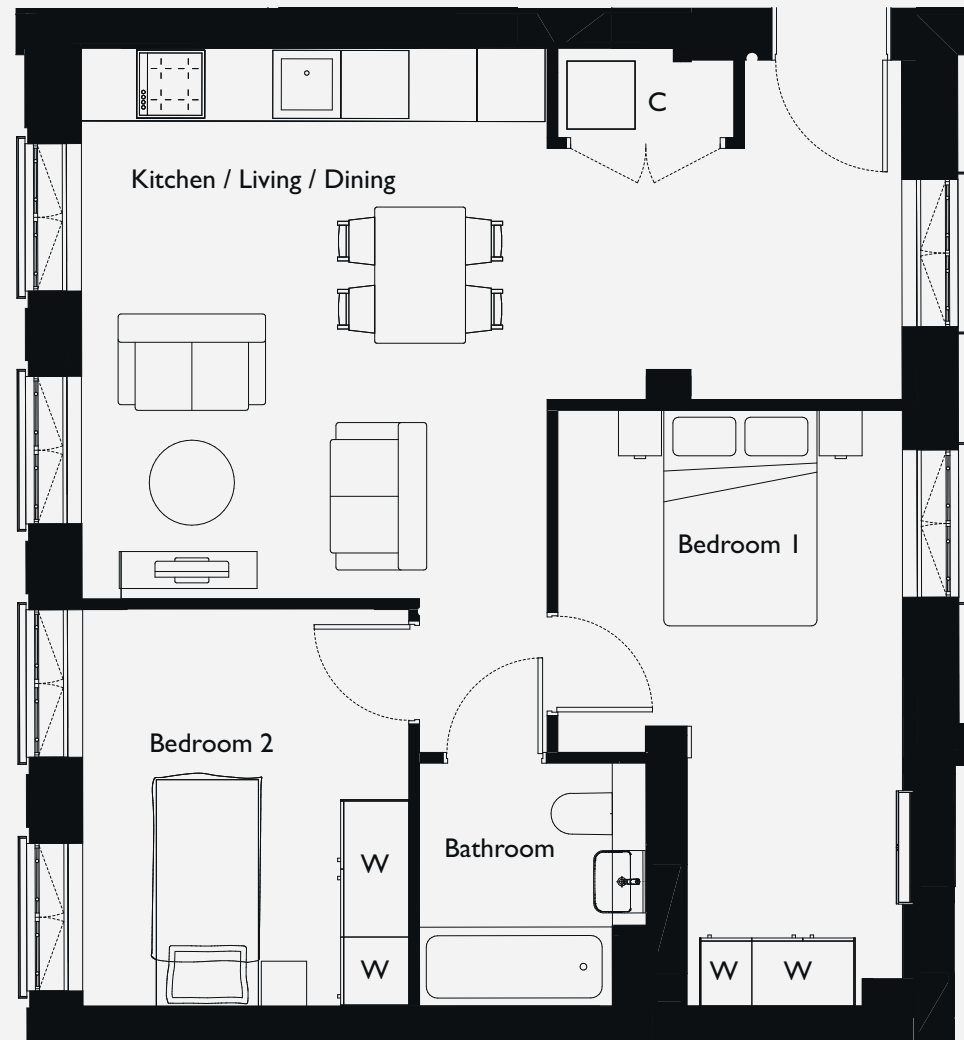
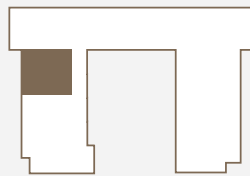
7.2m x 4.8m 23'7" x 15'9"

Bedroom 1 5.2m x 3.0m 17'1" x 9'10"

Bedroom 2 3.4m x 2.8m 11'2" x 9'2"

Levels

1 & 2



Apartment layouts provide approximate measurements only. Furniture within the marketing plans is indicative and for guidance purposes only. Dimensions, which are taken from the indicated points of measurement, are for guidance only and are not intended to be used for carpet sizes, appliance space or items of furniture. Measurements are rounded down and we work towards 10% tolerance. Apartment areas are provided as gross internal areas and may vary. Bathroom and kitchen layouts are indicative only and are subject to change. Wardrobe size and position may vary. Ceiling heights may vary within select apartments. All private outdoor space dimensions and areas are approximate and may vary. The information contained within this document does not constitute part of any offer, contract or warranty. Whilst the plans have been prepared with all due care for the convenience of the intending purchaser, the information contained herein is a preliminary guide only. Ceiling height may vary within select apartments.

THE DIDSBURY

EAST HAM

Apartment 9

Two bedroom apartment

Internal area 61m² / 565ft²

Dimensions

**Kitchen/Dining/
Living**

6.0m x 4.3m 19'8" x 14'1"

Bedroom 1

4.4m x 2.8m 14'5" x 9'2"

Bedroom 2

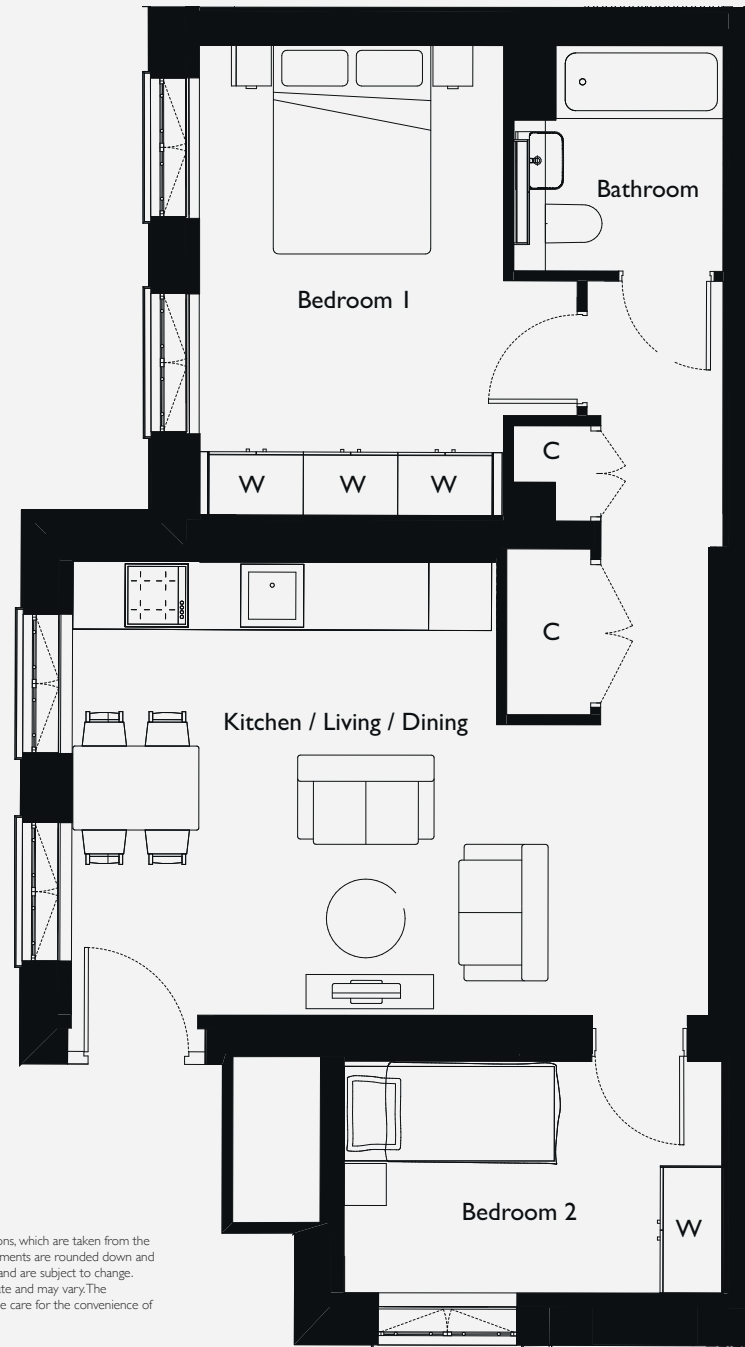
3.5m x 2.2m 11'5" x 7'2"

Level

Ground



Apartment layouts provide approximate measurements only. Furniture within the marketing plans is indicative and for guidance purposes only. Dimensions, which are taken from the indicated points of measurement, are for guidance only and are not intended to be used for carpet sizes, appliance space or items of furniture. Measurements are rounded down and we work towards 10% tolerance. Apartment areas are provided as gross internal areas and may vary. Bathroom and kitchen layouts are indicative only and are subject to change. Wardrobe size and position may vary. Ceiling heights may vary within select apartments. All private outdoor space dimensions and areas are approximate and may vary. The information contained within this document does not constitute part of any offer, contract or warranty. Whilst the plans have been prepared with all due care for the convenience of the intending purchaser, the information contained herein is a preliminary guide only. Ceiling height may vary within select apartments.



THE DIDSBURY

EAST HAM

Apartments 33 & 35

Two bedroom apartment

Internal area 61m² / 565ft²

Dimensions

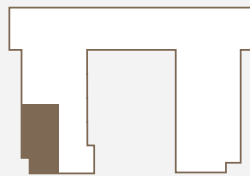
**Kitchen/Dining/
Living** 6.1m x 4.2m 20'0" x 13'9"

Bedroom 1 4.5m x 2.8m 14'9" x 9'2"

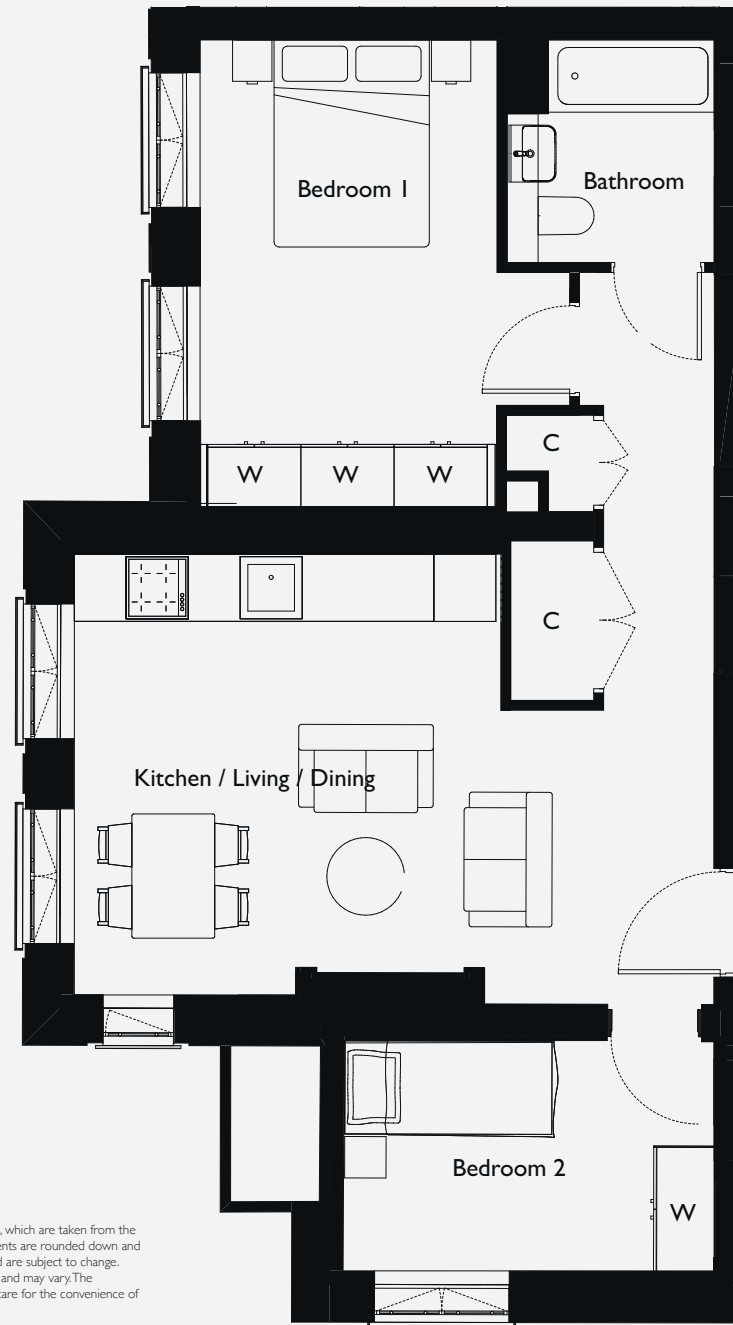
Bedroom 2 3.5m x 2.2m 11'5" x 7'2"

Levels

1 & 2



Apartment layouts provide approximate measurements only. Furniture within the marketing plans is indicative and for guidance purposes only. Dimensions, which are taken from the indicated points of measurement, are for guidance only and are not intended to be used for carpet sizes, appliance space or items of furniture. Measurements are rounded down and we work towards 10% tolerance. Apartment areas are provided as gross internal areas and may vary. Bathroom and kitchen layouts are indicative only and are subject to change. Wardrobe size and position may vary. Ceiling heights may vary within select apartments. All private outdoor space dimensions and areas are approximate and may vary. The information contained within this document does not constitute part of any offer, contract or warranty. Whilst the plans have been prepared with all due care for the convenience of the intending purchaser, the information contained herein is a preliminary guide only. Ceiling height may vary within select apartments.



THE DIDSBURY

EAST HAM

Apartments 12 & 18

Two bedroom apartment

Internal area 60m² / 645ft²

Dimensions

**Kitchen/Dining/
Living**

7.2m x 4.6m 23'7" x 15'1"

Bedroom 1

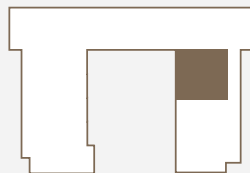
4.5m x 3.0m 14'9" x 9'10"

Bedroom 2

3.5m x 2.8m 11'6" x 9'2"

Levels

1 & 2



Apartment layouts provide approximate measurements only. Furniture within the marketing plans is indicative and for guidance purposes only. Dimensions, which are taken from the indicated points of measurement, are for guidance only and are not intended to be used for carpet sizes, appliance space or items of furniture. Measurements are rounded down and we work towards 10% tolerance. Apartment areas are provided as gross internal areas and may vary. Bathroom and kitchen layouts are indicative only and are subject to change. Wardrobe size and position may vary. Ceiling heights may vary within select apartments. All private outdoor space dimensions and areas are approximate and may vary. The information contained within this document does not constitute part of any offer, contract or warranty. Whilst the plans have been prepared with all due care for the convenience of the intending purchaser, the information contained herein is a preliminary guide only. Ceiling height may vary within select apartments.

THE DIDSBURY

EAST HAM

Apartments 37 & 39

Two bedroom apartment

Internal area 68m² / 731ft²

Dimensions

**Kitchen/Dining/
Living**

5.1m x 4.2m 16'9" x 13'9"

Bedroom 1

4.5m x 2.8m 14'9" x 9'2"

Bedroom 2

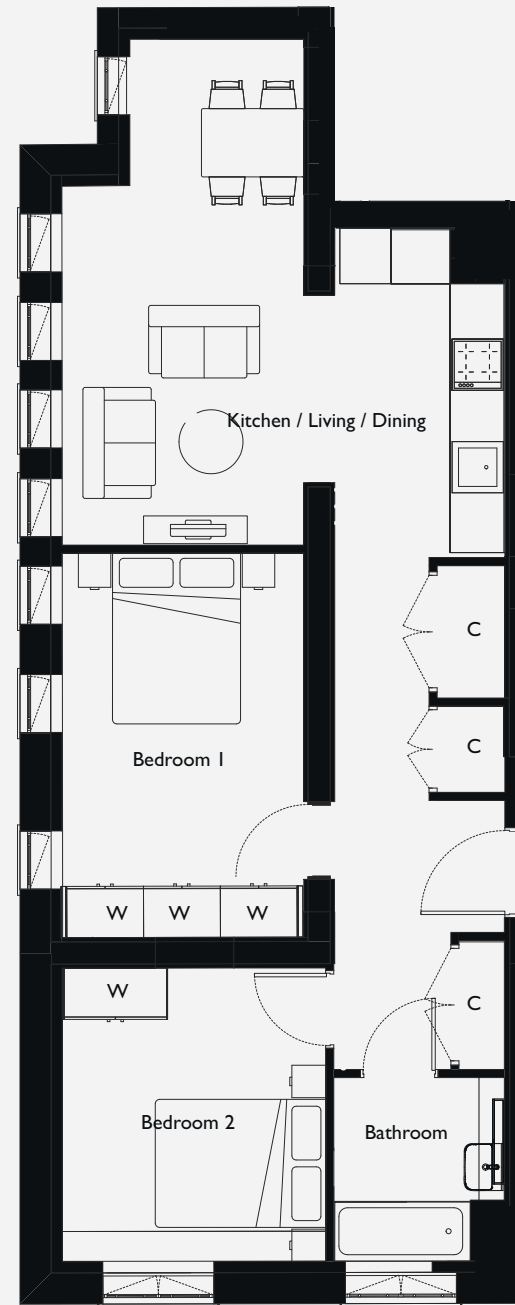
3.4m x 3.0m 11'1" x 9'10"

Levels

1 & 2



Apartment layouts provide approximate measurements only. Furniture within the marketing plans is indicative and for guidance purposes only. Dimensions, which are taken from the indicated points of measurement, are for guidance only and are not intended to be used for carpet sizes, appliance space or items of furniture. Measurements are rounded down and we work towards 10% tolerance. Apartment areas are provided as gross internal areas and may vary. Bathroom and kitchen layouts are indicative only and are subject to change. Wardrobe size and position may vary. Ceiling heights may vary within select apartments. All private outdoor space dimensions and areas are approximate and may vary. The information contained within this document does not constitute part of any offer, contract or warranty. Whilst the plans have been prepared with all due care for the convenience of the intending purchaser, the information contained herein is a preliminary guide only. Ceiling height may vary within select apartments.



love
to rent .co.uk

THE DIDSBURY

EAST HAM

Apartment 7

Two bedroom apartment

Internal area 61m² / 565ft²

Dimensions

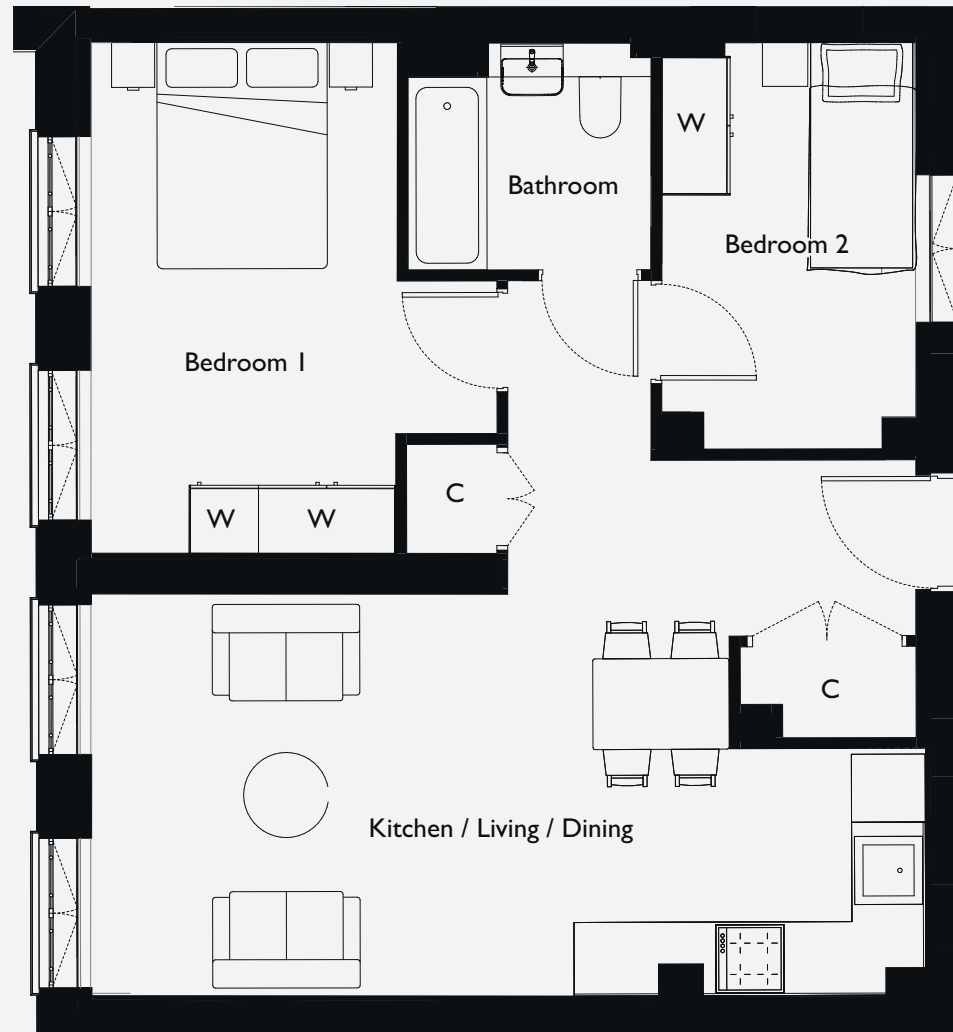
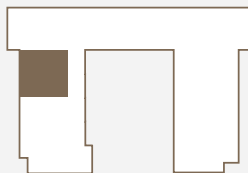
**Kitchen/Dining/
Living** 7.3m x 3.5m 23'11" x 11'6"

Bedroom 1 4.5m x 2.7m 14'9" x 8'10"

Bedroom 2 3.5m x 2.2m 11'6" x 7'3"

Level

Ground



Apartment layouts provide approximate measurements only. Furniture within the marketing plans is indicative and for guidance purposes only. Dimensions, which are taken from the indicated points of measurement, are for guidance only and are not intended to be used for carpet sizes, appliance space or items of furniture. Measurements are rounded down and we work towards 10% tolerance. Apartment areas are provided as gross internal areas and may vary. Bathroom and kitchen layouts are indicative only and are subject to change. Wardrobe size and position may vary. Ceiling heights may vary within select apartments. All private outdoor space dimensions and areas are approximate and may vary. The information contained within this document does not constitute part of any offer, contract or warranty. Whilst the plans have been prepared with all due care for the convenience of the intending purchaser, the information contained herein is a preliminary guide only. Ceiling height may vary within select apartments.

THE DIDSBURY

EAST HAM

Apartment 4

Two bedroom apartment

Internal area 63m² / 678ft²

Dimensions

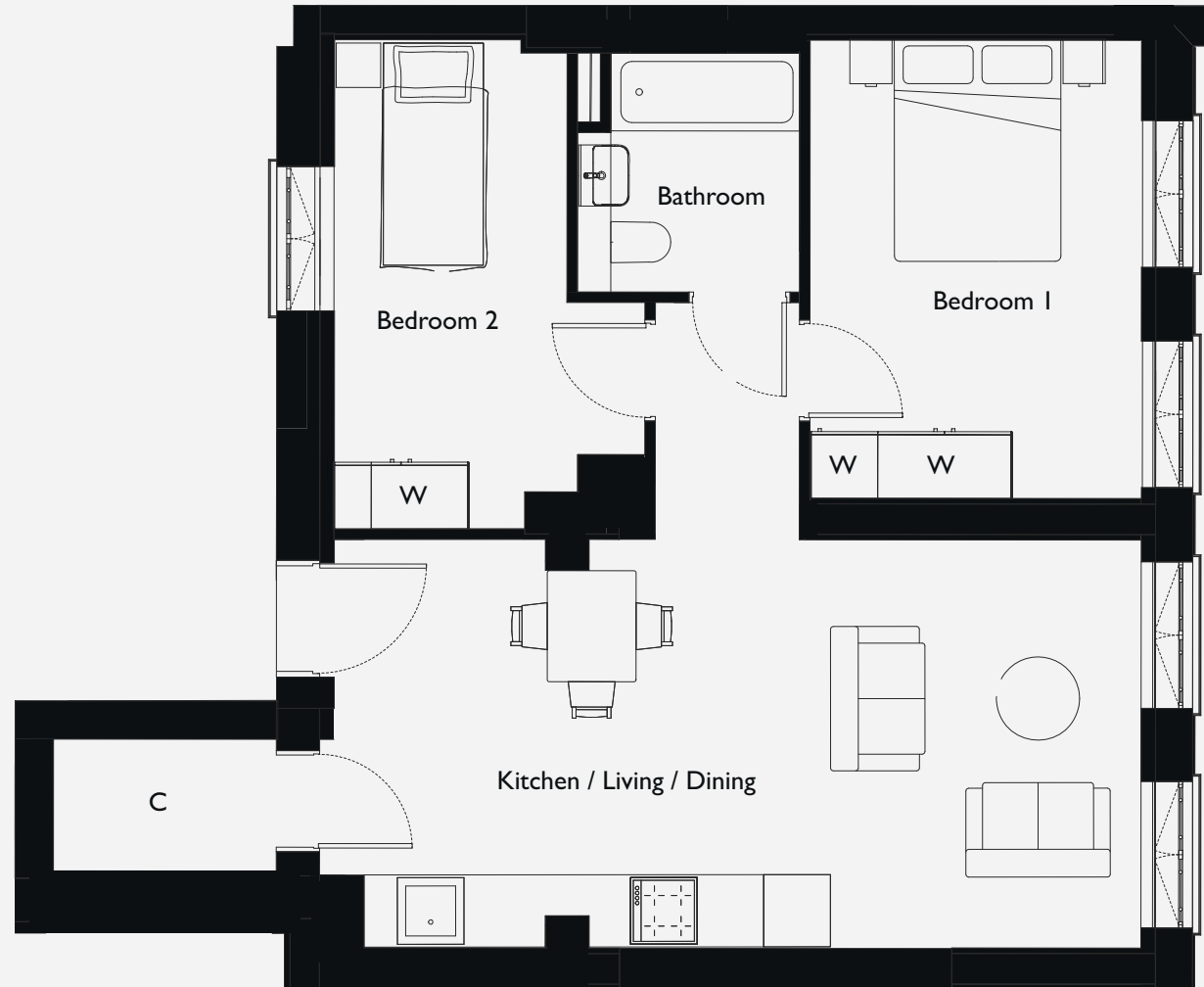
**Kitchen/Dining/
Living** 7.2m x 3.6m 23'7" x 11'10"

Bedroom 1 4.1m x 2.9m 13'5" x 9'6"

Bedroom 2 4.4m x 2.0m 14'5" x 6'7"

Level

Ground



Apartment layouts provide approximate measurements only. Furniture within the marketing plans is indicative and for guidance purposes only. Dimensions, which are taken from the indicated points of measurement, are for guidance only and are not intended to be used for carpet sizes, appliance space or items of furniture. Measurements are rounded down and we work towards 10% tolerance. Apartment areas are provided as gross internal areas and may vary. Bathroom and kitchen layouts are indicative only and are subject to change. Wardrobe size and position may vary. Ceiling heights may vary within select apartments. All private outdoor space dimensions and areas are approximate and may vary. The information contained within this document does not constitute part of any offer, contract or warranty. Whilst the plans have been prepared with all due care for the convenience of the intending purchaser, the information contained herein is a preliminary guide only. Ceiling height may vary within select apartments.

THE DIDSBURY

EAST HAM

Apartment 26

Two bedroom duplex lower floor

Internal area 40m² / 430ft²

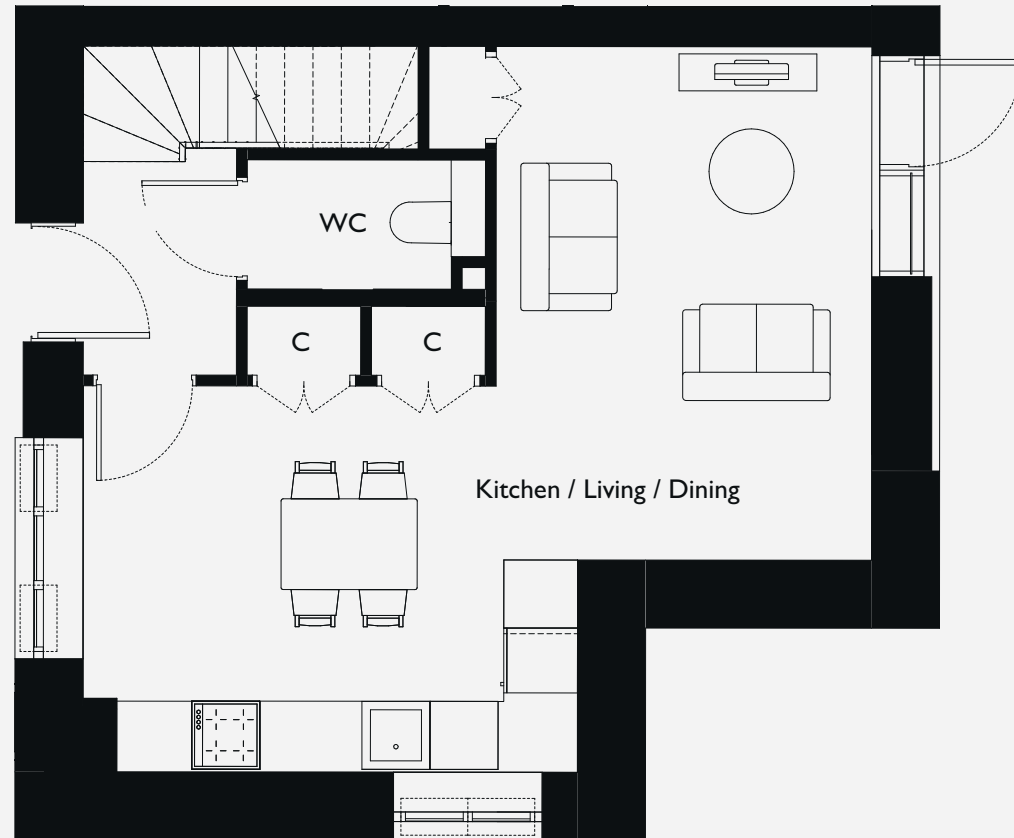
Dimensions

Kitchen/dining 4.3m x 3.4m 14'1" x 11'2"

Living 4.5m x 3.3m 14'9" x 10'10"

Levels

3 & 4



Apartment layouts provide approximate measurements only. Furniture within the marketing plans is indicative and for guidance purposes only. Dimensions, which are taken from the indicated points of measurement, are for guidance only and are not intended to be used for carpet sizes, appliance space or items of furniture. Measurements are rounded down and we work towards 10% tolerance. Apartment areas are provided as gross internal areas and may vary. Bathroom and kitchen layouts are indicative only and are subject to change. Wardrobe size and position may vary. Ceiling heights may vary within select apartments. All private outdoor space dimensions and areas are approximate and may vary. The information contained within this document does not constitute part of any offer, contract or warranty. Whilst the plans have been prepared with all due care for the convenience of the intending purchaser, the information contained herein is a preliminary guide only. Ceiling height may vary within select apartments.

love
to rent .co.uk

THE DIDSBURY

EAST HAM

Apartment 26

Two bedroom duplex upper floor

Internal area 40m² / 430ft²

Dimensions

Bedroom 1 4.3m x 3.1m 14'11" x 10'2"

Bedroom 2 3.3m x 2.8m 10'10" x 9'2"

Levels

3 & 4



Apartment layouts provide approximate measurements only. Furniture within the marketing plans is indicative and for guidance purposes only. Dimensions, which are taken from the indicated points of measurement, are for guidance only and are not intended to be used for carpet sizes, appliance space or items of furniture. Measurements are rounded down and we work towards 10% tolerance. Apartment areas are provided as gross internal areas and may vary. Bathroom and kitchen layouts are indicative only and are subject to change. Wardrobe size and position may vary. Ceiling heights may vary within select apartments. All private outdoor space dimensions and areas are approximate and may vary. The information contained within this document does not constitute part of any offer, contract or warranty. Whilst the plans have been prepared with all due care for the convenience of the intending purchaser, the information contained herein is a preliminary guide only. Ceiling height may vary within select apartments.

love
to rent .co.uk

THE DIDSBURY

EAST HAM

Apartment 22

Two bedroom duplex lower floor

Internal area 39m² / 419ft²

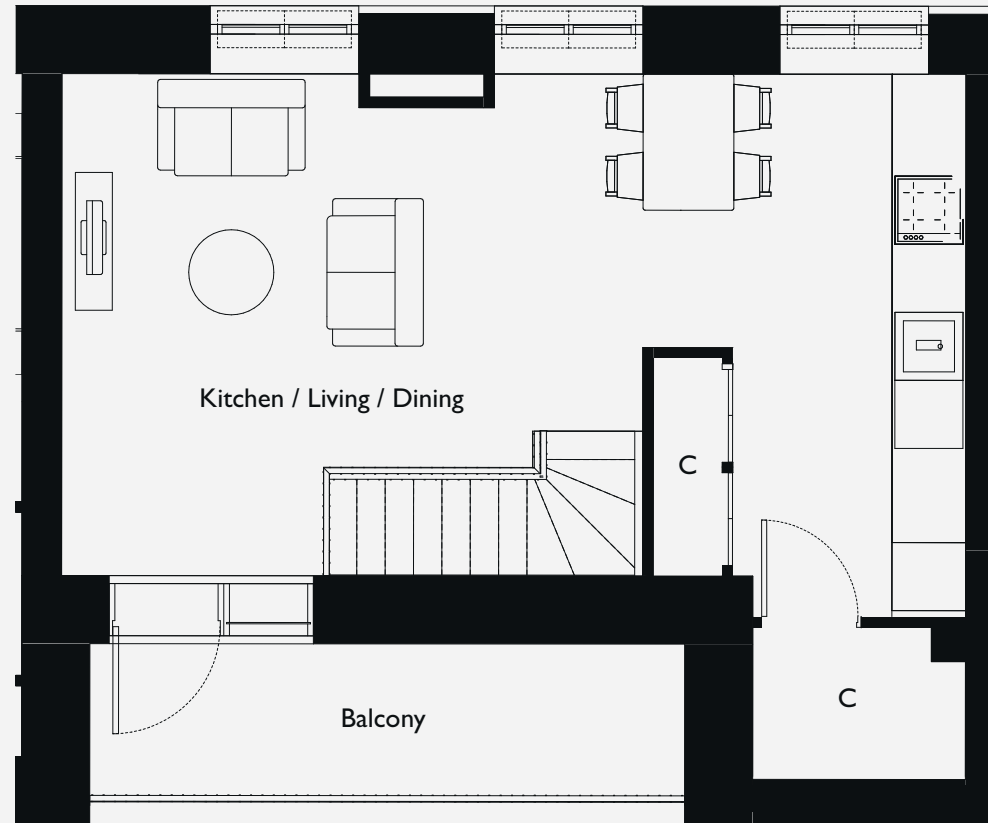
Dimensions

Kitchen/dining 4.7m x 2.8m 15'5" x 9'2"

Living 5.1m x 3.1m 16'9" x 10'2"

Levels

3 & 4



Apartment layouts provide approximate measurements only. Furniture within the marketing plans is indicative and for guidance purposes only. Dimensions, which are taken from the indicated points of measurement, are for guidance only and are not intended to be used for carpet sizes, appliance space or items of furniture. Measurements are rounded down and we work towards 10% tolerance. Apartment areas are provided as gross internal areas and may vary. Bathroom and kitchen layouts are indicative only and are subject to change. Wardrobe size and position may vary. Ceiling heights may vary within select apartments. All private outdoor space dimensions and areas are approximate and may vary. The information contained within this document does not constitute part of any offer, contract or warranty. Whilst the plans have been prepared with all due care for the convenience of the intending purchaser, the information contained herein is a preliminary guide only. Ceiling height may vary within select apartments.

love
to rent  .co.uk

THE DIDSBURY

EAST HAM

Apartment 22

Two bedroom duplex upper floor

Internal area 35m² / 376ft²

Dimensions

Bedroom 1 4.0m x 2.7m 13'11" x 8'10"

Bedroom 2 3.0m x 2.5m 9'10" x 8'2"

Levels

3 & 4



Apartment layouts provide approximate measurements only. Furniture within the marketing plans is indicative and for guidance purposes only. Dimensions, which are taken from the indicated points of measurement, are for guidance only and are not intended to be used for carpet sizes, appliance space or items of furniture. Measurements are rounded down and we work towards 10% tolerance. Apartment areas are provided as gross internal areas and may vary. Bathroom and kitchen layouts are indicative only and are subject to change. Wardrobe size and position may vary. Ceiling heights may vary within select apartments. All private outdoor space dimensions and areas are approximate and may vary. The information contained within this document does not constitute part of any offer, contract or warranty. Whilst the plans have been prepared with all due care for the convenience of the intending purchaser, the information contained herein is a preliminary guide only. Ceiling height may vary within select apartments.

love
to rent  .co.uk

THE DIDSBURY

EAST HAM

Apartment 28

Two bedroom duplex lower floor

Internal area 40m² / 430ft²

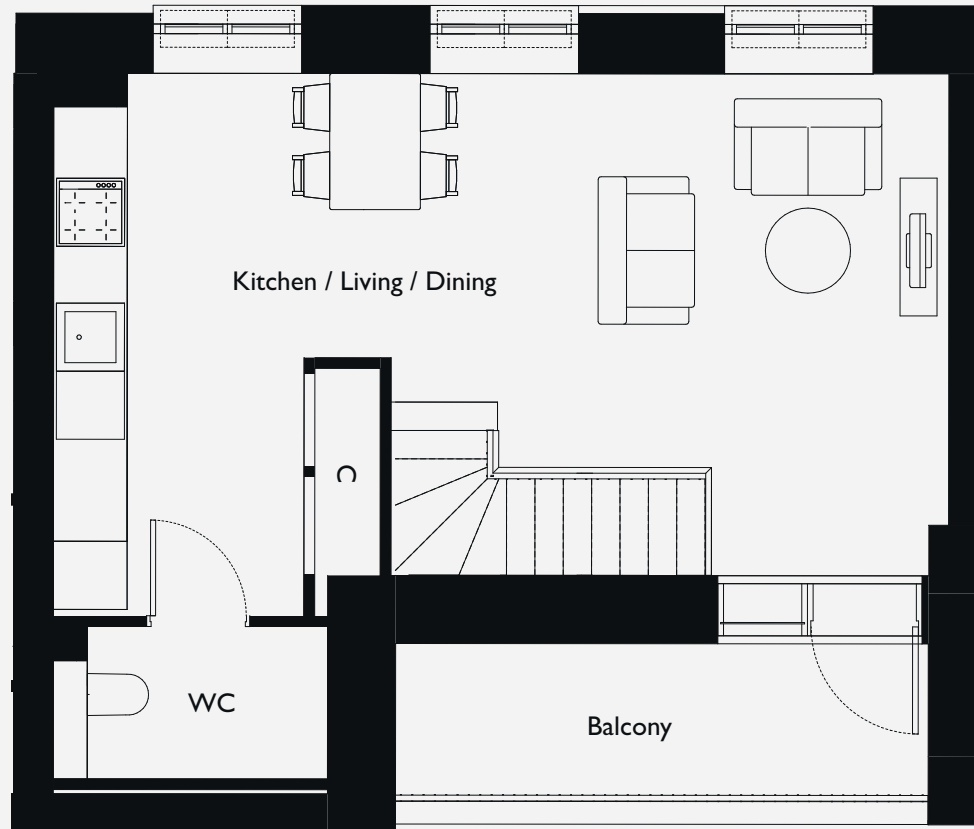
Dimensions

Kitchen/dining 4.7m x 2.9m 15'5" x 9'6"

Living 4.9m x 3.4m 16'1" x 11'2"

Levels

3 & 4



Apartment layouts provide approximate measurements only. Furniture within the marketing plans is indicative and for guidance purposes only. Dimensions, which are taken from the indicated points of measurement, are for guidance only and are not intended to be used for carpet sizes, appliance space or items of furniture. Measurements are rounded down and we work towards 10% tolerance. Apartment areas are provided as gross internal areas and may vary. Bathroom and kitchen layouts are indicative only and are subject to change. Wardrobe size and position may vary. Ceiling heights may vary within select apartments. All private outdoor space dimensions and areas are approximate and may vary. The information contained within this document does not constitute part of any offer, contract or warranty. Whilst the plans have been prepared with all due care for the convenience of the intending purchaser, the information contained herein is a preliminary guide only. Ceiling height may vary within select apartments.

love
to rent .co.uk

THE DIDSBURY

EAST HAM

Apartment 28

Two bedroom duplex upper floor

Internal area 34m² / 365ft²

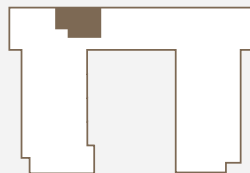
Dimensions

Bedroom 1 4.0m x 2.8m 13'1" x 9'2"

Bedroom 2 2.8m x 2.5m 9'2" x 8'2"

Levels

3 & 4



Apartment layouts provide approximate measurements only. Furniture within the marketing plans is indicative and for guidance purposes only. Dimensions, which are taken from the indicated points of measurement, are for guidance only and are not intended to be used for carpet sizes, appliance space or items of furniture. Measurements are rounded down and we work towards 10% tolerance. Apartment areas are provided as gross internal areas and may vary. Bathroom and kitchen layouts are indicative only and are subject to change. Wardrobe size and position may vary. Ceiling heights may vary within select apartments. All private outdoor space dimensions and areas are approximate and may vary. The information contained within this document does not constitute part of any offer, contract or warranty. Whilst the plans have been prepared with all due care for the convenience of the intending purchaser, the information contained herein is a preliminary guide only. Ceiling height may vary within select apartments.

THE DIDSBURY

EAST HAM

Apartment 29

Two bedroom duplex lower floor

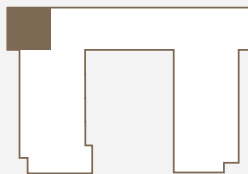
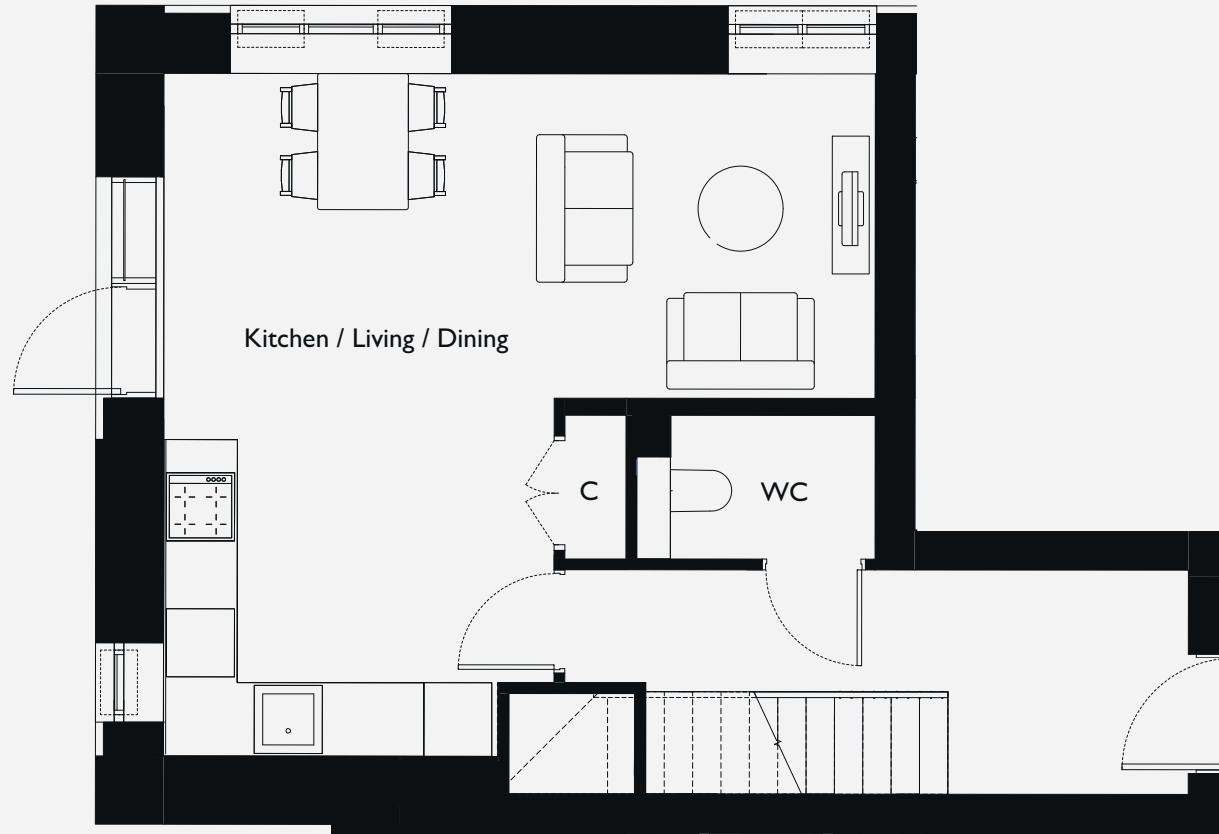
Internal area 39m² / 419ft²

Dimensions

**Kitchen/Dining/
Living** 6.2m x 6.0m 20'4 x 19'8"

Levels

3 & 4



Apartment layouts provide approximate measurements only. Furniture within the marketing plans is indicative and for guidance purposes only. Dimensions, which are taken from the indicated points of measurement, are for guidance only and are not intended to be used for carpet sizes, appliance space or items of furniture. Measurements are rounded down and we work towards 10% tolerance. Apartment areas are provided as gross internal areas and may vary. Bathroom and kitchen layouts are indicative only and are subject to change. Wardrobe size and position may vary. Ceiling heights may vary within select apartments. All private outdoor space dimensions and areas are approximate and may vary. The information contained within this document does not constitute part of any offer, contract or warranty. Whilst the plans have been prepared with all due care for the convenience of the intending purchaser, the information contained herein is a preliminary guide only. Ceiling height may vary within select apartments

love
to rent .co.uk

THE DIDSBURY

EAST HAM

Apartment 29

Two bedroom duplex upper floor

Internal area 46m² / 495ft²

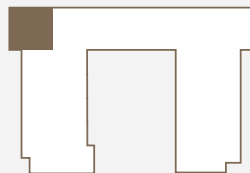
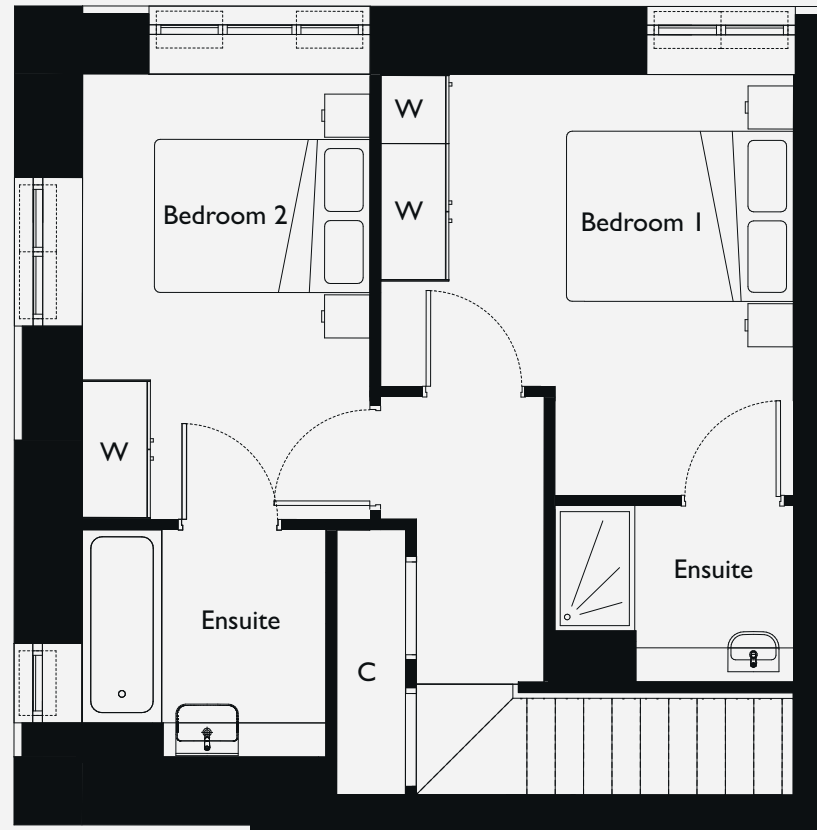
Dimensions

Bedroom 1 3.7m x 3.6m 12'2" x 11'10"

Bedroom 2 3.9m x 2.5m 12'10" x 8'2"

Levels

3 & 4



Apartment layouts provide approximate measurements only. Furniture within the marketing plans is indicative and for guidance purposes only. Dimensions, which are taken from the indicated points of measurement, are for guidance only and are not intended to be used for carpet sizes, appliance space or items of furniture. Measurements are rounded down and we work towards 10% tolerance. Apartment areas are provided as gross internal areas and may vary. Bathroom and kitchen layouts are indicative only and are subject to change. Wardrobe size and position may vary. Ceiling heights may vary within select apartments. All private outdoor space dimensions and areas are approximate and may vary. The information contained within this document does not constitute part of any offer, contract or warranty. Whilst the plans have been prepared with all due care for the convenience of the intending purchaser, the information contained herein is a preliminary guide only. Ceiling height may vary within select apartments.

love
to rent  .co.uk

THE DIDSBURY

EAST HAM

Apartment 32

Two bedroom duplex lower floor

Internal area 41m² / 441ft²

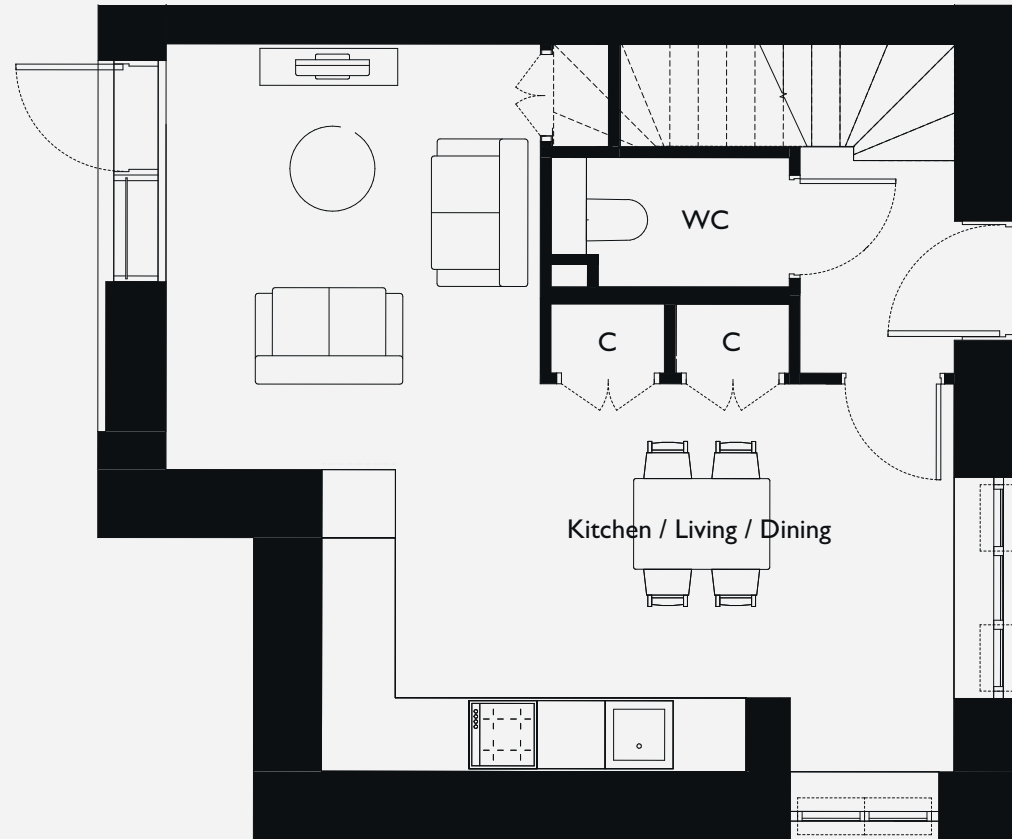
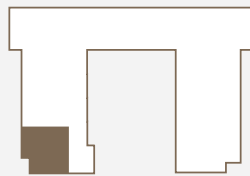
Dimensions

Kitchen/dining 5.5m x 3.4m 18'1" x 11'2"

Living 3.7m x 3.3m 12'2" x 10'10"

Levels

3 & 4



Apartment layouts provide approximate measurements only. Furniture within the marketing plans is indicative and for guidance purposes only. Dimensions, which are taken from the indicated points of measurement, are for guidance only and are not intended to be used for carpet sizes, appliance space or items of furniture. Measurements are rounded down and we work towards 10% tolerance. Apartment areas are provided as gross internal areas and may vary. Bathroom and kitchen layouts are indicative only and are subject to change. Wardrobe size and position may vary. Ceiling heights may vary within select apartments. All private outdoor space dimensions and areas are approximate and may vary. The information contained within this document does not constitute part of any offer, contract or warranty. Whilst the plans have been prepared with all due care for the convenience of the intending purchaser, the information contained herein is a preliminary guide only. Ceiling height may vary within select apartments.

THE DIDSBURY

EAST HAM

Apartment 32

Two bedroom duplex upper floor

Internal area 42m² / 452ft²

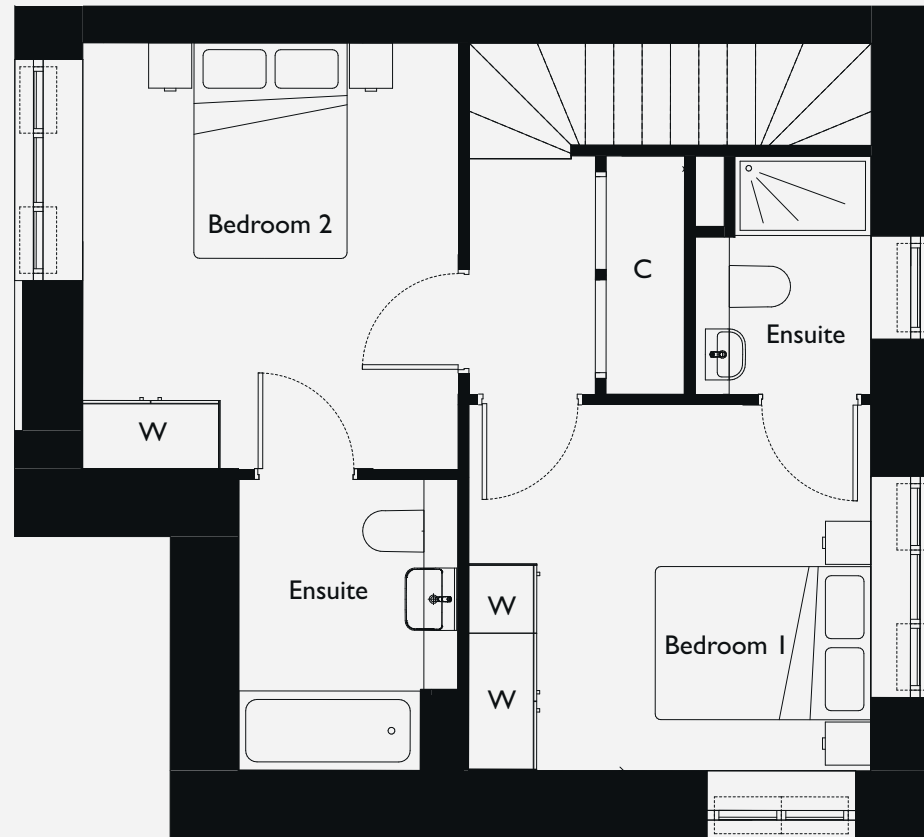
Dimensions

Bedroom 1 3.5m x 3.3m 11'5" x 10'9"

Bedroom 2 3.7m x 3.3m 12'1" x 10'9"

Levels

3 & 4



Apartment layouts provide approximate measurements only. Furniture within the marketing plans is indicative and for guidance purposes only. Dimensions, which are taken from the indicated points of measurement, are for guidance only and are not intended to be used for carpet sizes, appliance space or items of furniture. Measurements are rounded down and we work towards 10% tolerance. Apartment areas are provided as gross internal areas and may vary. Bathroom and kitchen layouts are indicative only and are subject to change. Wardrobe size and position may vary. Ceiling heights may vary within select apartments. All private outdoor space dimensions and areas are approximate and may vary. The information contained within this document does not constitute part of any offer, contract or warranty. Whilst the plans have been prepared with all due care for the convenience of the intending purchaser, the information contained herein is a preliminary guide only. Ceiling height may vary within select apartments.

love
to rent  .co.uk

THE DIDSBURY

EAST HAM

Apartment 31

Three bedroom duplex lower floor

Internal area 47m² / 505ft²

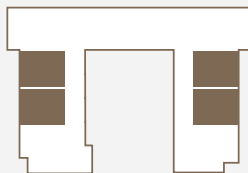
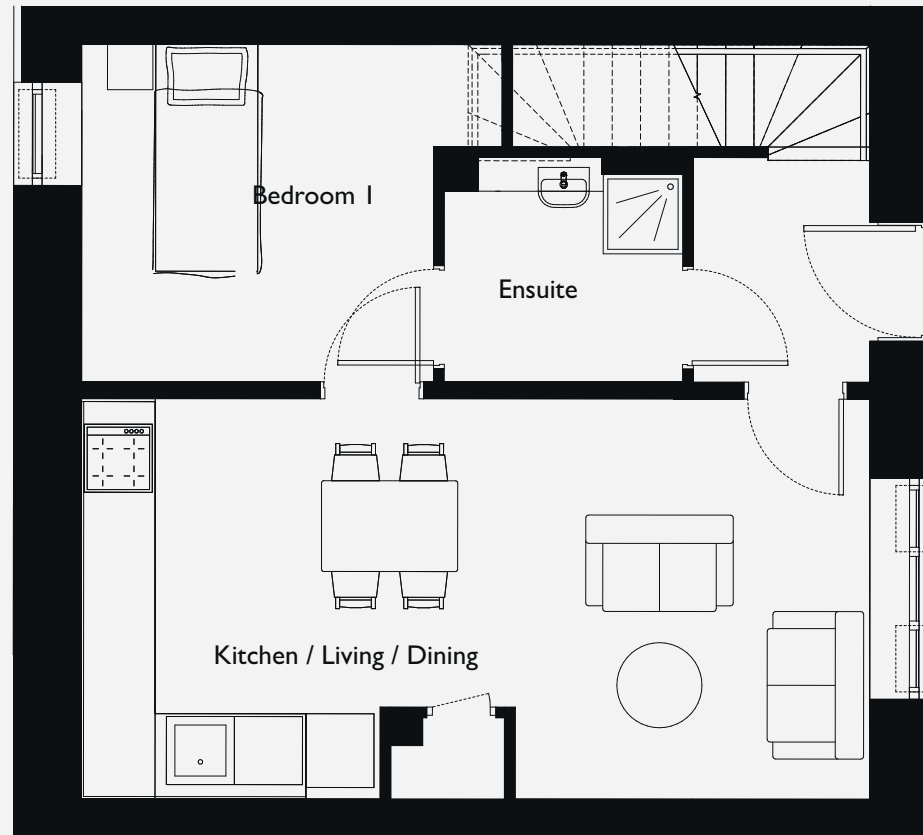
Dimensions

**Kitchen/Dining/
Living** 6.9m x 3.5m 22'8" x 11'6"

Bedroom I 3.1m x 3.1m 10'2" x 10'2"

Levels

3 & 4



Apartment layouts provide approximate measurements only. Furniture within the marketing plans is indicative and for guidance purposes only. Dimensions, which are taken from the indicated points of measurement, are for guidance only and are not intended to be used for carpet sizes, appliance space or items of furniture. Measurements are rounded down and we work towards 10% tolerance. Apartment areas are provided as gross internal areas and may vary. Bathroom and kitchen layouts are indicative only and are subject to change. Wardrobe size and position may vary. Ceiling heights may vary within select apartments. All private outdoor space dimensions and areas are approximate and may vary. The information contained within this document does not constitute part of any offer, contract or warranty. Whilst the plans have been prepared with all due care for the convenience of the intending purchaser, the information contained herein is a preliminary guide only. Ceiling height may vary within select apartments.

love
to rent  .co.uk

THE DIDSBURY

EAST HAM

Apartment 31

Three bedroom duplex upper floor

Internal area 46m² / 495ft²

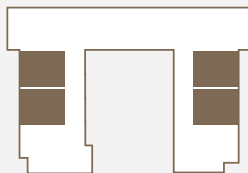
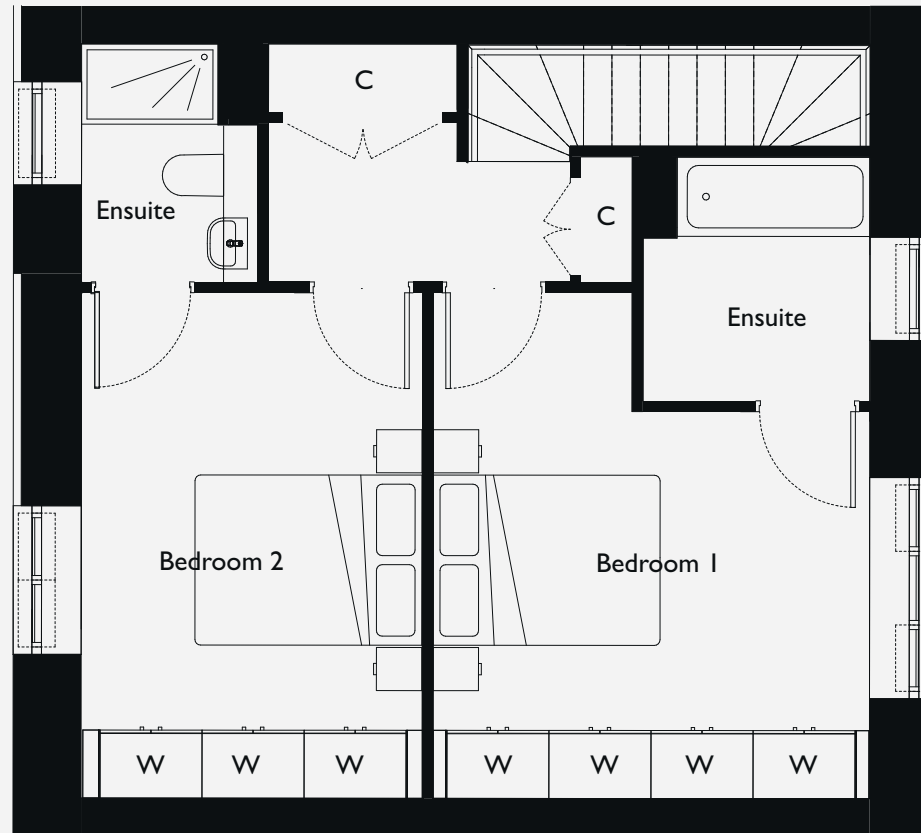
Dimensions

Bedroom 1 3.8m x 3.4m 12'6" x 11'2"

Bedroom 2 4.4m x 3.0m 13'1" x 9'10"

Levels

3 & 4



Apartment layouts provide approximate measurements only. Furniture within the marketing plans is indicative and for guidance purposes only. Dimensions, which are taken from the indicated points of measurement, are for guidance only and are not intended to be used for carpet sizes, appliance space or items of furniture. Measurements are rounded down and we work towards 10% tolerance. Apartment areas are provided as gross internal areas and may vary. Bathroom and kitchen layouts are indicative only and are subject to change. Wardrobe size and position may vary. Ceiling heights may vary within select apartments. All private outdoor space dimensions and areas are approximate and may vary. The information contained within this document does not constitute part of any offer, contract or warranty. Whilst the plans have been prepared with all due care for the convenience of the intending purchaser, the information contained herein is a preliminary guide only. Ceiling height may vary within select apartments.

love
to rent  .co.uk

THE DIDSBURY

EAST HAM

Apartment 30

Three bedroom duplex lower floor

Internal area 46m² / 485ft²

Dimensions

**Kitchen/Dining/
Living** 6.9m x 3.5m 22'8" x 11'6"

Bedroom I 3.1m x 2.9m 10'2" x 9'6"

Levels

3 & 4



Apartment layouts provide approximate measurements only. Furniture within the marketing plans is indicative and for guidance purposes only. Dimensions, which are taken from the indicated points of measurement, are for guidance only and are not intended to be used for carpet sizes, appliance space or items of furniture. Measurements are rounded down and we work towards 10% tolerance. Apartment areas are provided as gross internal areas and may vary. Bathroom and kitchen layouts are indicative only and are subject to change. Wardrobe size and position may vary. Ceiling heights may vary within select apartments. All private outdoor space dimensions and areas are approximate and may vary. The information contained within this document does not constitute part of any offer, contract or warranty. Whilst the plans have been prepared with all due care for the convenience of the intending purchaser, the information contained herein is a preliminary guide only. Ceiling height may vary within select apartments.

love
to rent  .co.uk

THE DIDSBURY

EAST HAM

Apartment 30

Three bedroom duplex upper floor

Internal area 46m² / 495ft²

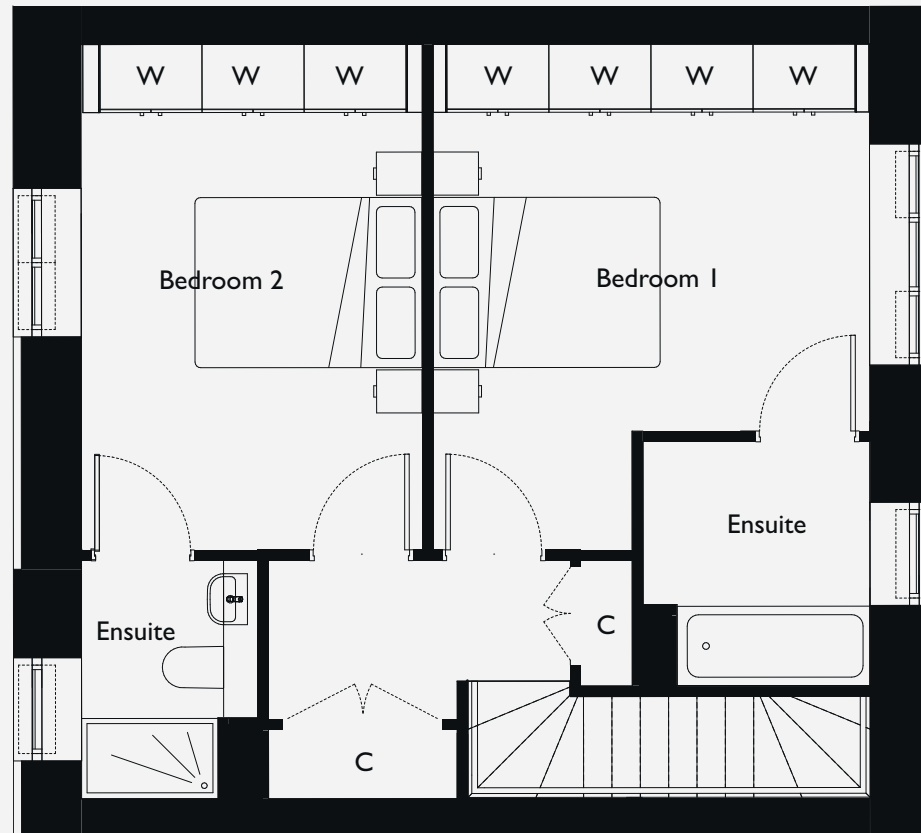
Dimensions

Bedroom 1 3.8m x 3.4m 12'6" x 11'2"

Bedroom 2 4.4m x 3.0m 13'11" x 9'10"

Levels

3 & 4



Apartment layouts provide approximate measurements only. Furniture within the marketing plans is indicative and for guidance purposes only. Dimensions, which are taken from the indicated points of measurement, are for guidance only and are not intended to be used for carpet sizes, appliance space or items of furniture. Measurements are rounded down and we work towards 10% tolerance. Apartment areas are provided as gross internal areas and may vary. Bathroom and kitchen layouts are indicative only and are subject to change. Wardrobe size and position may vary. Ceiling heights may vary within select apartments. All private outdoor space dimensions and areas are approximate and may vary. The information contained within this document does not constitute part of any offer, contract or warranty. Whilst the plans have been prepared with all due care for the convenience of the intending purchaser, the information contained herein is a preliminary guide only. Ceiling height may vary within select apartments.

THE DIDSBURY

EAST HAM

Apartment 24

Three bedroom duplex lower floor

Internal area 46m² / 495ft²

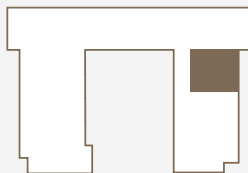
Dimensions

**Kitchen/Dining/
Living** 6.9m x 3.5m 22'8" x 11'6"

Bedroom I 3.1m x 2.9m 10'2" x 9'6"

Levels

3 & 4



Apartment layouts provide approximate measurements only. Furniture within the marketing plans is indicative and for guidance purposes only. Dimensions, which are taken from the indicated points of measurement, are for guidance only and are not intended to be used for carpet sizes, appliance space or items of furniture. Measurements are rounded down and we work towards 10% tolerance. Apartment areas are provided as gross internal areas and may vary. Bathroom and kitchen layouts are indicative only and are subject to change. Wardrobe size and position may vary. Ceiling heights may vary within select apartments. All private outdoor space dimensions and areas are approximate and may vary. The information contained within this document does not constitute part of any offer, contract or warranty. Whilst the plans have been prepared with all due care for the convenience of the intending purchaser, the information contained herein is a preliminary guide only. Ceiling height may vary within select apartments.

love
to rent  .co.uk

THE DIDSBURY

EAST HAM

Apartment 24

Three bedroom duplex upper floor

Internal area 46m² / 495ft²

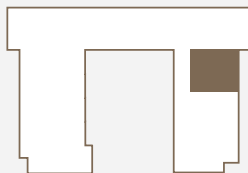
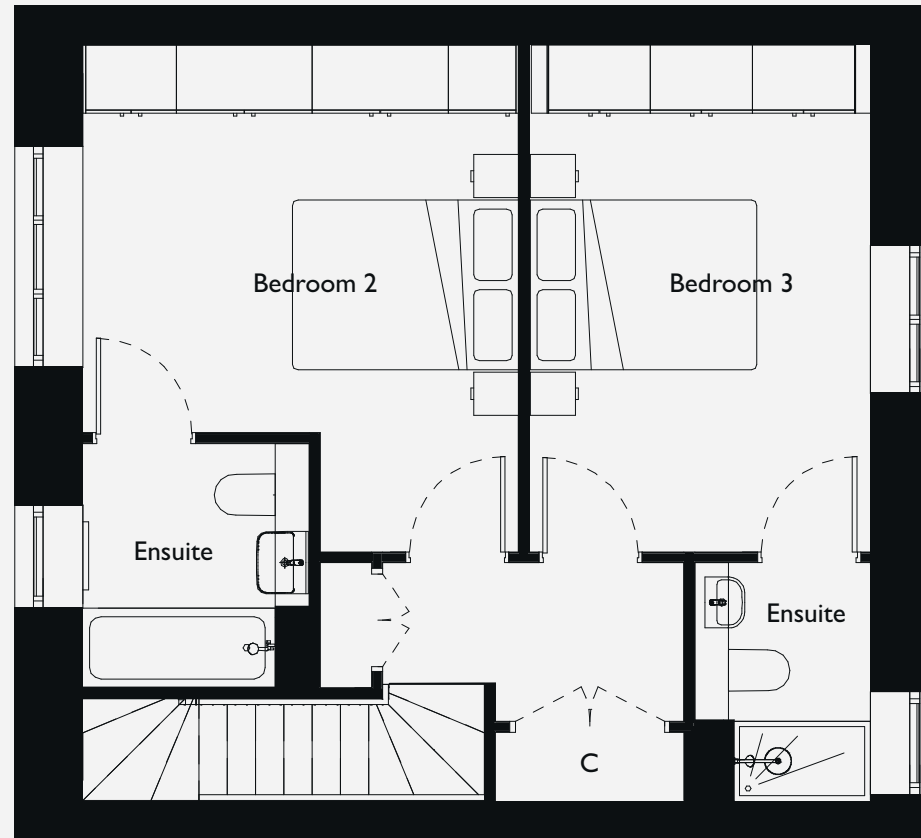
Dimensions

Bedroom 1 3.8m x 3.4m 12'6" x 11'2"

Bedroom 2 4.4m x 3.0m 13'1" x 9'10"

Levels

3 & 4



Apartment layouts provide approximate measurements only. Furniture within the marketing plans is indicative and for guidance purposes only. Dimensions, which are taken from the indicated points of measurement, are for guidance only and are not intended to be used for carpet sizes, appliance space or items of furniture. Measurements are rounded down and we work towards 10% tolerance. Apartment areas are provided as gross internal areas and may vary. Bathroom and kitchen layouts are indicative only and are subject to change. Wardrobe size and position may vary. Ceiling heights may vary within select apartments. All private outdoor space dimensions and areas are approximate and may vary. The information contained within this document does not constitute part of any offer, contract or warranty. Whilst the plans have been prepared with all due care for the convenience of the intending purchaser, the information contained herein is a preliminary guide only. Ceiling height may vary within select apartments.

love
to rent .co.uk

THE DIDSBURY

EAST HAM

Apartment 25

Three bedroom duplex lower floor

Internal area 46m² / 485ft²

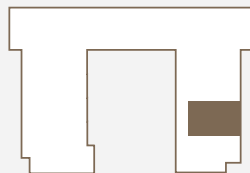
Dimensions

**Kitchen/Dining/
Living** 6.9m x 3.5m 22'8" x 11'6"

Bedroom I 3.1m x 2.9m 10'2" x 9'6"

Levels

3 & 4



Apartment layouts provide approximate measurements only. Furniture within the marketing plans is indicative and for guidance purposes only. Dimensions, which are taken from the indicated points of measurement, are for guidance only and are not intended to be used for carpet sizes, appliance space or items of furniture. Measurements are rounded down and we work towards 10% tolerance. Apartment areas are provided as gross internal areas and may vary. Bathroom and kitchen layouts are indicative only and are subject to change. Wardrobe size and position may vary. Ceiling heights may vary within select apartments. All private outdoor space dimensions and areas are approximate and may vary. The information contained within this document does not constitute part of any offer, contract or warranty. Whilst the plans have been prepared with all due care for the convenience of the intending purchaser, the information contained herein is a preliminary guide only. Ceiling height may vary within select apartments.

love
to rent  .co.uk

THE DIDSBURY

EAST HAM

Apartment 25

Three bedroom duplex upper floor

Internal area 46m² / 495ft²

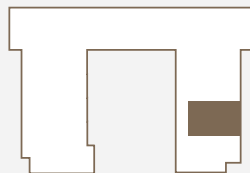
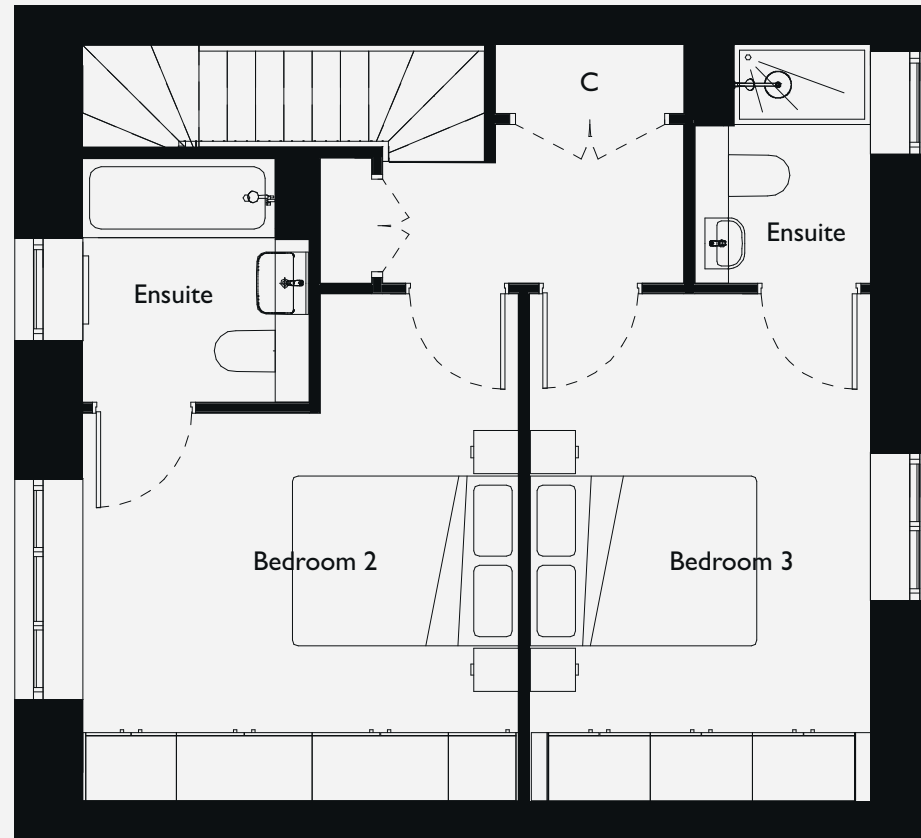
Dimensions

Bedroom 1 3.8m x 3.4m 12'6" x 11"2"

Bedroom 2 4.4m x 3.0m 13'11" x 9'10"

Levels

3 & 4



Apartment layouts provide approximate measurements only. Furniture within the marketing plans is indicative and for guidance purposes only. Dimensions, which are taken from the indicated points of measurement, are for guidance only and are not intended to be used for carpet sizes, appliance space or items of furniture. Measurements are rounded down and we work towards 10% tolerance. Apartment areas are provided as gross internal areas and may vary. Bathroom and kitchen layouts are indicative only and are subject to change. Wardrobe size and position may vary. Ceiling heights may vary within select apartments. All private outdoor space dimensions and areas are approximate and may vary. The information contained within this document does not constitute part of any offer, contract or warranty. Whilst the plans have been prepared with all due care for the convenience of the intending purchaser, the information contained herein is a preliminary guide only. Ceiling height may vary within select apartments.

love
to rent .co.uk

THE DIDSBURY

EAST HAM

Apartment 23

Three bedroom duplex lower floor

Internal area 48m² / 516ft²

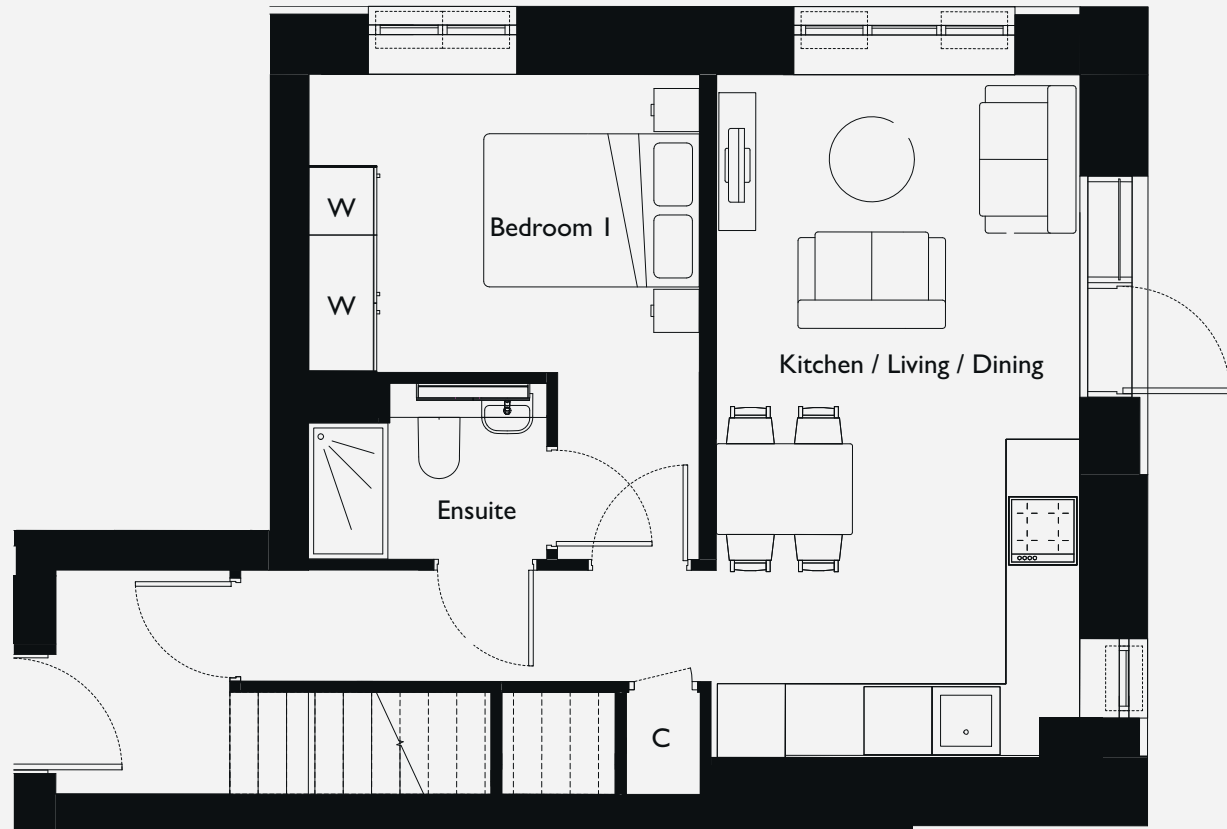
Dimensions

**Kitchen/Dining/
Living** 6.0m x 3.2m 19'8" x 10'6"

Bedroom I 3.4m x 2.6m 11'2" x 8'6"

Levels

3 & 4



Apartment layouts provide approximate measurements only. Furniture within the marketing plans is indicative and for guidance purposes only. Dimensions, which are taken from the indicated points of measurement, are for guidance only and are not intended to be used for carpet sizes, appliance space or items of furniture. Measurements are rounded down and we work towards 10% tolerance. Apartment areas are provided as gross internal areas and may vary. Bathroom and kitchen layouts are indicative only and are subject to change. Wardrobe size and position may vary. Ceiling heights may vary within select apartments. All private outdoor space dimensions and areas are approximate and may vary. The information contained within this document does not constitute part of any offer, contract or warranty. Whilst the plans have been prepared with all due care for the convenience of the intending purchaser, the information contained herein is a preliminary guide only. Ceiling height may vary within select apartments.

love
to rent  .co.uk

THE DIDSBURY

EAST HAM

Apartment 23

Three bedroom duplex upper floor

Internal area 42m² / 452ft²

Dimensions

Bedroom 1 4.3m x 2.7m 14'11" x 8'10"

Bedroom 2 3.2m x 2.7m 10'6" x 8'10"


Levels

3 & 4



Apartment layouts provide approximate measurements only. Furniture within the marketing plans is indicative and for guidance purposes only. Dimensions, which are taken from the indicated points of measurement, are for guidance only and are not intended to be used for carpet sizes, appliance space or items of furniture. Measurements are rounded down and we work towards 10% tolerance. Apartment areas are provided as gross internal areas and may vary. Bathroom and kitchen layouts are indicative only and are subject to change. Wardrobe size and position may vary. Ceiling heights may vary within select apartments. All private outdoor space dimensions and areas are approximate and may vary. The information contained within this document does not constitute part of any offer, contract or warranty. Whilst the plans have been prepared with all due care for the convenience of the intending purchaser, the information contained herein is a preliminary guide only. Ceiling height may vary within select apartments.

love
to rent .co.uk



For further information call
0204 525 1919



This development is car free and residents are not able to apply to the Council for a Parking Permit (unless they are the holder of a disabled persons badge issued pursuant to Section 21 of the Chronically Sick and Disabled Persons Act (1970).